

ABOUT CITOCORE

Step into the future of fiber optic technology with Fuzhou Citocore Technology, your premier destination for innovation. Proudly headquartered in Fuzhou, China, our global team works collaboratively to propel the CITOCORE brand to new heights within the dynamic telecommunications industry. As a distinguished supplier of passive fiber optic components, we stand out by delivering unparalleled technical expertise, commercial insights, and logistical support.

At Citocore, our unwavering dedication to innovation is the driving force behind products that consistently set industry benchmarks for both quality and performance. Explore our extensive product range, featuring Optical Termination Boxes, Fiber Optic Cables, Optical Components, cutting-edge Tools, and Precision Instruments.

The Cutting Edge In Fiber Optic Solutions

Experience the Citocore advantage with our commitment to excellence—enjoy factory-direct pricing, streamlined production processes for optimal efficiency, swift delivery timelines, and a responsive multilingual customer support system. Your journey into the world of fiber optic technology begins with Citocore, where seamless innovation meets unparalleled service.



ABOUT FIBER OPTIC TERMINATION BOXES

With a legacy defined by engineering excellence and an unwavering commitment to innovation, Citocore proudly unveils its range of Optical Termination Boxes and Optical Rosettes.

Infused with cutting-edge technology, our optical products embody a comprehensive approach that harmonizes performance, versatility, and cost-effectiveness—hallmarks of our dedication to enhancing our customers' competitive edge.

Recognizing the uniqueness of each project, we've diversified our offerings to cater to a broad spectrum of requirements. Featuring port capacities ranging from 2 to 64 ports and IP protection levels spanning basic to advanced, our products are engineered to excel across diverse environments and applications. Citocore introduces a spectrum of colors, a variety of plastics, and proprietary designs that not only elevate aesthetics but also contribute to functionality and seamless urban and rural system integration worldwide.

Our Research and Development team tirelessly strives to stay ahead of emerging technologies, ensuring our solutions not only meet current market demands but are also primed for future needs. This commitment to research and development is reflected in the superior quality and durability of our products, meticulously tested under rigorous conditions to guarantee optimal performance. At Citocore, we redefine possibilities, setting new standards for the present and anticipating the demands of



CITO-CTO-2A



| SPECIFICATIONS | |
|------------------------------|----------------------------------------------|
| L*W*H (mm) | 175*122*31 |
| Max Splicing Capacity (core) | 2 |
| Packing Information | G.W: 13Kg QTY: 50pcs MEAS.:665*380*205mm |

CITO-CTO-2B



| SPECIFICATIONS | |
|------------------------------|-----------------------------------------------|
| L*W*H (mm) | 152*133*37 |
| Max Splicing Capacity (core) | 2 |
| Packing Information | G.W.:10.7Kg QTY:40Pcs MEAS.:535*330*300mm |

CITO-CTO-4A



| SPECIFICATIONS | |
|------------------------------|----------------------------------------------|
| L*W*H (mm) | 206*135*40 |
| Max Splicing Capacity (core) | 8 |
| Packing Information | G.W: 14Kg QTY: 40pcs MEAS.:590*445*270mm |

CITO-CTO-4B



| SPECIFICATIONS | |
|------------------------------|------------------------------------------------|
| L*W*H (mm) | 206*129*44 |
| Max Splicing Capacity (core) | 8 |
| Packing Information | G.W: 13.5Kg QTY: 40pcs MEAS.:590*445*270mm |

CITO-CTO-4K



| SPECIFICATIONS | |
|------------------------------|------------------------------------------------|
| L*W*H (mm) | 193*149*40 |
| Max Splicing Capacity (core) | 6 |
| Packing Information | G.W: 11.9Kg QTY: 40pcs MEAS.:425*330*570mm |

CITO-CTO-4K-2



| SPECIFICATIONS | |
|------------------------------|------------------------------------------------|
| L*W*H (mm) | 193*149*40 |
| Max Splicing Capacity (core) | 6 |
| Packing Information | G.W: 11.9Kg QTY: 40pcs MEAS.:425*330*570mm |

CITO-CTO-6A



SPECIFICATIONS

| | |
|------------------------------|-------------------------------------------------|
| L*W*H (mm) | 193*149*40 |
| Max Splicing Capacity (core) | 6 |
| Packing Information | G.W: 11.9Kg QTY: 450pcs MEAS.:425*330*570mm |

CITO-CTO-6ZT



SPECIFICATIONS

| | |
|------------------------------|-----------------------------------------------|
| L*W*H (mm) | 235*126*51 |
| Max Splicing Capacity (core) | 6 |
| Packing Information | G.W.:11.9Kg QTY:40Pcs MEAS.:425*330*570mm |

CITO-CTO-8A



SPECIFICATIONS

| | |
|------------------------------|------------------------------------------------|
| L*W*H (mm) | 228*172*47 |
| Max Splicing Capacity (core) | 8 |
| Packing Information | G.W: 24.4Kg QTY: 40pcs MEAS.:500*385*620mm |

CITO-CTO-8A-1



SPECIFICATIONS

| | |
|------------------------------|------------------------------------------------|
| L*W*H (mm) | 281*177*84 |
| Max Splicing Capacity (core) | 36 |
| Packing Information | G.W: 12.9Kg QTY: 10pcs MEAS.:400*315*565mm |

CITO-CTO-8B-2



SPECIFICATIONS

| | |
|------------------------------|------------------------------------------------|
| L*W*H (mm) | 267*207*95 |
| Max Splicing Capacity (core) | 26 |
| Packing Information | G.W: 13.5Kg QTY: 10pcs MEAS.:460*290*570mm |

CITO-CTO-8C



SPECIFICATIONS

| | |
|------------------------------|----------------------------------------------|
| L*W*H (mm) | 207*160*46 |
| Max Splicing Capacity (core) | 8 |
| Packing Information | G.W: 21Kg QTY: 40pcs MEAS.:450*385*620mm |

CITO-CTO-8E



SPECIFICATIONS

| | |
|------------------------------|------------------------------------------------|
| L*W*H (mm) | 227*181*54.5 |
| Max Splicing Capacity (core) | 8 |
| Packing Information | G.W: 14.1Kg QTY: 20pcs MEAS.:530*420*390mm |

CITO-CTO-8F



SPECIFICATIONS

| | |
|------------------------------|---------------------------------------------|
| L*W*H (mm) | 216*155*45 |
| Max Splicing Capacity (core) | 16 |
| Packing Information | G.W.:16Kg QTY:40Pcs MEAS.:456*356*600mm |

CITO-CTO-8H



SPECIFICATIONS

| | |
|------------------------------|----------------------------------------------|
| L*W*H (mm) | 233*214*66 |
| Max Splicing Capacity (core) | 28 |
| Packing Information | G.W: 20Kg QTY: 20pcs MEAS.:500*480*510mm |

CITO-CTO-8KX



SPECIFICATIONS

| | |
|------------------------------|----------------------------------------------|
| L*W*H (mm) | 268*154*83 |
| Max Splicing Capacity (core) | 24 |
| Packing Information | G.W: 12Kg QTY: 10pcs MEAS.:370*295*570mm |

CITO-CTO-8KX-1



SPECIFICATIONS

| | |
|------------------------------|----------------------------------------------|
| L*W*H (mm) | 268*154*83 |
| Max Splicing Capacity (core) | 48 |
| Packing Information | G.W: 12Kg QTY: 10pcs MEAS.:370*295*570mm |

CITO-CTO-8Q



SPECIFICATIONS

| | |
|------------------------------|----------------------------------------------|
| L*W*H (mm) | 280*182*82 |
| Max Splicing Capacity (core) | 12 |
| Packing Information | G.W: 15Kg QTY: 10pcs MEAS.:410*315*510mm |

CITO-CTO-8SX-2



SPECIFICATIONS

| | |
|------------------------------|----------------------------------------------|
| L*W*H (mm) | 319*200*97 |
| Max Splicing Capacity (core) | 36 |
| Packing Information | G.W: 14Kg QTY: 10pcs MEAS.:450*360*630mm |

CITO-CTO-8SX-3



SPECIFICATIONS

| | |
|------------------------------|--------------------------------------------|
| L*W*H (mm) | 377*225*122 |
| Max Splicing Capacity (core) | 108 |
| Packing Information | G.W.:25Kg QTY:8Pcs MEAS.:500*405*555mm |

CITO-CTO-8SX-4



SPECIFICATIONS

| | |
|------------------------------|---------------------------------------------|
| L*W*H (mm) | 377*225*122 |
| Max Splicing Capacity (core) | 108 |
| Packing Information | G.W: 25Kg QTY: 8pcs MEAS.:500*405*555mm |

CITO-CTO-8SX-5



SPECIFICATIONS

| | |
|------------------------------|---------------------------------------------|
| L*W*H (mm) | 377*225*122 |
| Max Splicing Capacity (core) | 108 |
| Packing Information | G.W: 25Kg QTY: 8pcs MEAS.:500*405*555mm |

CITO-CTO-8SX-6



SPECIFICATIONS

| | |
|------------------------------|---------------------------------------------|
| L*W*H (mm) | 377*225*122 |
| Max Splicing Capacity (core) | 108 |
| Packing Information | G.W: 25Kg QTY: 8pcs MEAS.:500*405*555mm |

CITO-CTO-8X-1



SPECIFICATIONS

| | |
|------------------------------|----------------------------------------------|
| L*W*H (mm) | 313*195*120 |
| Max Splicing Capacity (core) | 72 |
| Packing Information | G.W: 16Kg QTY: 10pcs MEAS.:450*345*685mm |

CITO-CTO-8X-2



| SPECIFICATIONS | |
|------------------------------|-----------------------------------------------|
| L*W*H (mm) | 313*195*98 |
| Max Splicing Capacity (core) | 72 |
| Packing Information | G.W.: 16Kg QTY: 10pcs MEAS.:450*345*685mm |

CITO-CTO-8ZT



| SPECIFICATIONS | |
|------------------------------|---------------------------------------------|
| L*W*H (mm) | 235*126*51 |
| Max Splicing Capacity (core) | 16 |
| Packing Information | G.W.:31Kg QTY:50Pcs MEAS.:720*265*615mm |

CITO-CTO-8ZT-1



| SPECIFICATIONS | |
|------------------------------|---------------------------------------------|
| L*W*H (mm) | 235*126*51 |
| Max Splicing Capacity (core) | 16 |
| Packing Information | G.W.:31Kg QTY:50Pcs MEAS.:720*265*615mm |

CITO-CTO-8ZT-2



| SPECIFICATIONS | |
|------------------------------|---------------------------------------------|
| L*W*H (mm) | 235*126*51 |
| Max Splicing Capacity (core) | 16 |
| Packing Information | G.W.:31Kg QTY:50Pcs MEAS.:720*265*615mm |

CITO-CTO-8ZX



| SPECIFICATIONS | |
|------------------------------|-----------------------------------------------|
| L*W*H (mm) | 152*106*59 |
| Max Splicing Capacity (core) | 12 |
| Packing Information | G.W.: 15Kg QTY: 40pcs MEAS.:465*340*360mm |

CITO-CTO-10A



| SPECIFICATIONS | |
|------------------------------|-----------------------------------------------|
| L*W*H (mm) | 124*84*55 |
| Max Splicing Capacity (core) | 12 |
| Packing Information | G.W.: 17Kg QTY: 40pcs MEAS.:420*270*630mm |

CITO-CTO-10CY



SPECIFICATIONS

| | |
|------------------------------|-----------------------------------------------|
| L*W*H (mm) | 189*127*77 |
| Max Splicing Capacity (core) | 12 |
| Packing Information | G.W.: 15Kg QTY: 40pcs MEAS.:440*290*710mm |

CITO-CTO-10ZX



SPECIFICATIONS

| | |
|------------------------------|---------------------------------------------|
| L*W*H (mm) | 153*106*64 |
| Max Splicing Capacity (core) | 12 |
| Packing Information | G.W.:18Kg QTY:50Pcs MEAS.:570*340*355mm |

CITO-CTO-12C



SPECIFICATIONS

| | |
|------------------------------|-----------------------------------------------|
| L*W*H (mm) | 233*214*66 |
| Max Splicing Capacity (core) | 40 |
| Packing Information | G.W.:21.2Kg QTY:20Pcs MEAS.:500*480*510mm |

CITO-CTO-12D



SPECIFICATIONS

| | |
|------------------------------|-----------------------------------------------|
| L*W*H (mm) | 267*207*95 |
| Max Splicing Capacity (core) | 27 |
| Packing Information | G.W.:13.5Kg QTY:10Pcs MEAS.:460*290*570mm |

CITO-CTO-12E



SPECIFICATIONS

| | |
|------------------------------|----------------------------------------------|
| L*W*H (mm) | 290*175*83 |
| Max Splicing Capacity (core) | 18 |
| Packing Information | G.W: 13Kg QTY: 10pcs MEAS.:410*320*570mm |

CITO-CTO-12E-1



SPECIFICATIONS

| | |
|------------------------------|----------------------------------------------|
| L*W*H (mm) | 290*175*83 |
| Max Splicing Capacity (core) | 18 |
| Packing Information | G.W: 13Kg QTY: 10pcs MEAS.:410*320*570mm |

CITO-CTO-12E-3



SPECIFICATIONS

| | |
|------------------------------|-----------------------------------------------|
| L*W*H (mm) | 290*175*83 |
| Max Splicing Capacity (core) | 72 |
| Packing Information | G.W.: 13Kg QTY: 10pcs MEAS.:410*320*570mm |

CITO-CTO-12ZS



SPECIFICATIONS

| | |
|------------------------------|---------------------------------------------|
| L*W*H (mm) | 205*153*52 |
| Max Splicing Capacity (core) | 8 |
| Packing Information | G.W.:11Kg QTY:20Pcs MEAS.:440*340*340mm |

CITO-CTO-12ZT



SPECIFICATIONS

| | |
|------------------------------|---------------------------------------------|
| L*W*H (mm) | 205*153*68 |
| Max Splicing Capacity (core) | 20 |
| Packing Information | G.W.:11Kg QTY:20Pcs MEAS.:450*340*410mm |

CITO-CTO-16A-1



SPECIFICATIONS

| | |
|------------------------------|---------------------------------------------|
| L*W*H (mm) | 281*177*102 |
| Max Splicing Capacity (core) | 36 |
| Packing Information | G.W.:12Kg QTY:10Pcs MEAS.:400*310*665mm |

CITO-CTO-16B



SPECIFICATIONS

| | |
|------------------------------|------------------------------------------------|
| L*W*H (mm) | 360*181*90 |
| Max Splicing Capacity (core) | 48 |
| Packing Information | G.W.: 17.5Kg QTY: 8pcs MEAS.:650*360*600mm |

CITO-CTO-16B-1



SPECIFICATIONS

| | |
|------------------------------|-------------------------------------------------|
| L*W*H (mm) | 294*254*106 |
| Max Splicing Capacity (core) | 12 |
| Packing Information | G.W.: 15.5Kg QTY: 10pcs MEAS.:550*335*670mm |

CITO-CTO-16C



SPECIFICATIONS

| | |
|------------------------------|-----------------------------------------------|
| L*W*H (mm) | 330*275*101 |
| Max Splicing Capacity (core) | 48 |
| Packing Information | G.W.: 18Kg QTY: 10pcs MEAS.:600*360*630mm |

CITO-CTO-16D



SPECIFICATIONS

| | |
|------------------------------|-----------------------------------------------|
| L*W*H (mm) | 306*253*92 |
| Max Splicing Capacity (core) | 26 |
| Packing Information | G.W.:14.1Kg QTY:10Pcs MEAS.:560*350*570mm |

CITO-CTO-16DG



SPECIFICATIONS

| | |
|------------------------------|---------------------------------------------|
| L*W*H (mm) | 260*214*81 |
| Max Splicing Capacity (core) | 24 |
| Packing Information | G.W.:13Kg QTY:10Pcs MEAS.:460*290*570mm |

CITO-CTO-16F-1



SPECIFICATIONS

| | |
|------------------------------|--------------------------------------------|
| L*W*H (mm) | 389*242*126 |
| Max Splicing Capacity (core) | 96 |
| Packing Information | G.W.:23Kg QTY:6Pcs MEAS.:530*425*470mm |

CITO-CTO-16F-2



SPECIFICATIONS

| | |
|------------------------------|--------------------------------------------|
| L*W*H (mm) | 388*242*128 |
| Max Splicing Capacity (core) | 16 |
| Packing Information | G.W.:23Kg QTY:6Pcs MEAS.:530*425*470mm |

CITO-CTO-16F-3



SPECIFICATIONS

| | |
|------------------------------|--------------------------------------------|
| L*W*H (mm) | 388*242*128 |
| Max Splicing Capacity (core) | 16 |
| Packing Information | G.W.:23Kg QTY:6Pcs MEAS.:530*425*470mm |

CITO-CTO-16F-4



SPECIFICATIONS

| | |
|------------------------------|--------------------------------------------|
| L*W*H (mm) | 388*242*128 |
| Max Splicing Capacity (core) | 120 |
| Packing Information | G.W.:23Kg QTY:6Pcs MEAS.:530*425*470mm |

CITO-CTO-16F-5



SPECIFICATIONS

| | |
|------------------------------|--------------------------------------------|
| L*W*H (mm) | 388*242*128 |
| Max Splicing Capacity (core) | 192 |
| Packing Information | G.W.:23Kg QTY:6Pcs MEAS.:530*425*470mm |

CITO-CTO-16F-6



SPECIFICATIONS

| | |
|------------------------------|--------------------------------------------|
| L*W*H (mm) | 388*242*128 |
| Max Splicing Capacity (core) | 384 |
| Packing Information | G.W.:23Kg QTY:6Pcs MEAS.:530*425*470mm |

CITO-CTO-16G



SPECIFICATIONS

| | |
|------------------------------|---------------------------------------------|
| L*W*H (mm) | 303*237*109 |
| Max Splicing Capacity (core) | 26 |
| Packing Information | G.W.:16Kg QTY:10Pcs MEAS.:510*335*680mm |

CITO-CTO-16G-1



SPECIFICATIONS

| | |
|------------------------------|---------------------------------------------|
| L*W*H (mm) | 303*237*109 |
| Max Splicing Capacity (core) | 13 |
| Packing Information | G.W.:16Kg QTY:10Pcs MEAS.:510*335*680mm |

CITO-CTO-16G-3



SPECIFICATIONS

| | |
|------------------------------|---------------------------------------------|
| L*W*H (mm) | 321*230*104 |
| Max Splicing Capacity (core) | 16 |
| Packing Information | G.W.:25Kg QTY:10Pcs MEAS.:510*360*750mm |

CITO-CTO-16G-4



SPECIFICATIONS

| | |
|------------------------------|---------------------------------------------|
| L*W*H (mm) | 321*230*104 |
| Max Splicing Capacity (core) | 24 |
| Packing Information | G.W.:25Kg QTY:10Pcs MEAS.:510*360*750mm |

CITO-CTO-16G-5



SPECIFICATIONS

| | |
|------------------------------|---------------------------------------------|
| L*W*H (mm) | 321*230*104 |
| Max Splicing Capacity (core) | 32 |
| Packing Information | G.W.:25Kg QTY:10Pcs MEAS.:510*360*750mm |

CITO-CTO-16H-2



SPECIFICATIONS

| | |
|------------------------------|---------------------------------------------|
| L*W*H (mm) | 294*251*85 |
| Max Splicing Capacity (core) | 16 |
| Packing Information | G.W.:16Kg QTY:10Pcs MEAS.:560*340*600mm |

CITO-CTO-16L



SPECIFICATIONS

| | |
|------------------------------|----------------------------------------------|
| L*W*H (mm) | 303*251*85 |
| Max Splicing Capacity (core) | 52 |
| Packing Information | G.W.:17.5Kg QTY:8Pcs MEAS.:650*360*600mm |

CITO-CTO-16M



SPECIFICATIONS

| | |
|------------------------------|-----------------------------------------------|
| L*W*H (mm) | 344*210*89 |
| Max Splicing Capacity (core) | 72 |
| Packing Information | G.W.:20.3Kg QTY:10Pcs MEAS.:490*375*545mm |

CITO-CTO-16N



SPECIFICATIONS

| | |
|------------------------------|-----------------------------------------------|
| L*W*H (mm) | 344*210*89 |
| Max Splicing Capacity (core) | 36 |
| Packing Information | G.W.:18.3Kg QTY:10Pcs MEAS.:490*375*545mm |

CITO-CTO-16P



SPECIFICATIONS

| | |
|------------------------------|---------------------------------------------|
| L*W*H (mm) | 290*175*83 |
| Max Splicing Capacity (core) | 16 |
| Packing Information | G.W.:13Kg QTY:10Pcs MEAS.:410*320*570mm |

CITO-CTO-16Q



SPECIFICATIONS

| | |
|------------------------------|--------------------------------------------|
| L*W*H (mm) | 378*255*116 |
| Max Splicing Capacity (core) | 136 |
| Packing Information | G.W.:25Kg QTY:8Pcs MEAS.:540*405*540mm |

CITO-CTO-16Q-1



SPECIFICATIONS

| | |
|------------------------------|--------------------------------------------|
| L*W*H (mm) | 378*255*116 |
| Max Splicing Capacity (core) | 16 |
| Packing Information | G.W.:25Kg QTY:8Pcs MEAS.:540*405*540mm |

CITO-CTO-16Q-2



SPECIFICATIONS

| | |
|------------------------------|--------------------------------------------|
| L*W*H (mm) | 378*255*116 |
| Max Splicing Capacity (core) | 16 |
| Packing Information | G.W.:25Kg QTY:8Pcs MEAS.:540*405*540mm |

CITO-CTO-16Q-3



SPECIFICATIONS

| | |
|------------------------------|--------------------------------------------|
| L*W*H (mm) | 378*255*116 |
| Max Splicing Capacity (core) | 200 |
| Packing Information | G.W.:25Kg QTY:8Pcs MEAS.:540*405*540mm |

CITO-CTO-16Q-4



SPECIFICATIONS

| | |
|------------------------------|--------------------------------------------|
| L*W*H (mm) | 378*255*116 |
| Max Splicing Capacity (core) | 200 |
| Packing Information | G.W.:25Kg QTY:8Pcs MEAS.:540*405*540mm |

CITO-CTO-16T



SPECIFICATIONS

| | |
|------------------------------|---------------------------------------------|
| L*W*H (mm) | 347*205*122 |
| Max Splicing Capacity (core) | 25 |
| Packing Information | G.W.:23Kg QTY:10Pcs MEAS.:450*390*690mm |

CITO-CTO-16T-1



SPECIFICATIONS

| | |
|------------------------------|---------------------------------------------|
| L*W*H (mm) | 347*205*122 |
| Max Splicing Capacity (core) | 33 |
| Packing Information | G.W.:23Kg QTY:10Pcs MEAS.:450*390*690mm |

CITO-CTO-16U-1E



SPECIFICATIONS

| | |
|------------------------------|---------------------------------------------|
| L*W*H (mm) | 326*259*106 |
| Max Splicing Capacity (core) | 40 |
| Packing Information | G.W.:26Kg QTY:10Pcs MEAS.:570*360*560mm |

CITO-CTO-16U-2



SPECIFICATIONS

| | |
|------------------------------|---------------------------------------------|
| L*W*H (mm) | 326*259*106 |
| Max Splicing Capacity (core) | 40 |
| Packing Information | G.W.:26Kg QTY:10Pcs MEAS.:570*360*560mm |

CITO-CTO-16W



SPECIFICATIONS

| | |
|------------------------------|---------------------------------------------|
| L*W*H (mm) | 291*175*83 |
| Max Splicing Capacity (core) | 16 |
| Packing Information | G.W.:12Kg QTY:10Pcs MEAS.:410*320*570mm |

CITO-CTO-16W-1



SPECIFICATIONS

| | |
|------------------------------|---------------------------------------------|
| L*W*H (mm) | 290*175*93 |
| Max Splicing Capacity (core) | 16 |
| Packing Information | G.W.:12Kg QTY:10Pcs MEAS.:410*320*570mm |

CITO-CTO-16W-2



SPECIFICATIONS

| | |
|------------------------------|---------------------------------------------|
| L*W*H (mm) | 290*175*83 |
| Max Splicing Capacity (core) | 16 |
| Packing Information | G.W.:12Kg QTY:10Pcs MEAS.:410*320*570mm |

CITO-CTO-16W-3



SPECIFICATIONS

| | |
|------------------------------|---------------------------------------------|
| L*W*H (mm) | 291*175*83 |
| Max Splicing Capacity (core) | 152 |
| Packing Information | G.W.:12Kg QTY:10Pcs MEAS.:410*320*570mm |

CITO-CTO-16W-4



SPECIFICATIONS

| | |
|------------------------------|---------------------------------------------|
| L*W*H (mm) | 291*175*83 |
| Max Splicing Capacity (core) | 152 |
| Packing Information | G.W.:12Kg QTY:10Pcs MEAS.:410*320*570mm |

CITO-CTO-16X-3



SPECIFICATIONS

| | |
|------------------------------|---------------------------------------------|
| L*W*H (mm) | 393*198*98 |
| Max Splicing Capacity (core) | 18 |
| Packing Information | G.W.:22Kg QTY:10Pcs MEAS.:450*410*660mm |

CITO-CTO-16X-8



SPECIFICATIONS

| | |
|------------------------------|---------------------------------------------|
| L*W*H (mm) | 393*198*121 |
| Max Splicing Capacity (core) | 32 |
| Packing Information | G.W.:23Kg QTY:10Pcs MEAS.:480*430*770mm |

CITO-CTO-24A



SPECIFICATIONS

| | |
|------------------------------|-----------------------------------------------|
| L*W*H (mm) | 345*259*90 |
| Max Splicing Capacity (core) | 96 |
| Packing Information | G.W.:18.5Kg QTY:10Pcs MEAS.:560*370*535mm |

CITO-CTO-24C



SPECIFICATIONS

| | |
|------------------------------|-----------------------------------------------|
| L*W*H (mm) | 345*259*90 |
| Max Splicing Capacity (core) | 96 |
| Packing Information | G.W.:18.5Kg QTY:10Pcs MEAS.:560*370*535mm |

CITO-CTO-24E-1



SPECIFICATIONS

| | |
|------------------------------|-----------------------------------------------|
| L*W*H (mm) | 345*259*90 |
| Max Splicing Capacity (core) | 96 |
| Packing Information | G.W.:18.5Kg QTY:10Pcs MEAS.:560*370*535mm |

CITO-CTO-24E-4



SPECIFICATIONS

| | |
|------------------------------|-----------------------------------------------|
| L*W*H (mm) | 345*259*90 |
| Max Splicing Capacity (core) | 96 |
| Packing Information | G.W.:18.5Kg QTY:10Pcs MEAS.:560*370*535mm |

CITO-CTO-24G



SPECIFICATIONS

| | |
|------------------------------|-----------------------------------------------|
| L*W*H (mm) | 345*259*90 |
| Max Splicing Capacity (core) | 96 |
| Packing Information | G.W.:18.5Kg QTY:10Pcs MEAS.:560*370*535mm |

CITO-CTO-24H-1



SPECIFICATIONS

| | |
|------------------------------|-----------------------------------------------|
| L*W*H (mm) | 250*340*110 |
| Max Splicing Capacity (core) | 24 |
| Packing Information | G.W.:19.6Kg QTY:10Pcs MEAS.:600*380*700mm |

CITO-CTO-24N



SPECIFICATIONS

| | |
|------------------------------|-----------------------------------------------|
| L*W*H (mm) | 351*210*87 |
| Max Splicing Capacity (core) | 24 |
| Packing Information | G.W.:20.3Kg QTY:10Pcs MEAS.:490*375*545mm |

CITO-CTO-24N-2



SPECIFICATIONS

| | |
|------------------------------|-----------------------------------------------|
| L*W*H (mm) | 351*210*87 |
| Max Splicing Capacity (core) | 24 |
| Packing Information | G.W.:20.3Kg QTY:10Pcs MEAS.:490*375*545mm |

CITO-CTO-24N-CP



SPECIFICATIONS

| | |
|------------------------------|-----------------------------------------------|
| L*W*H (mm) | 351*210*87 |
| Max Splicing Capacity (core) | 24 |
| Packing Information | G.W.:20.3Kg QTY:10Pcs MEAS.:490*375*545mm |

CITO-CTO-24Q



SPECIFICATIONS

| | |
|------------------------------|--------------------------------------------|
| L*W*H (mm) | 378*255*136 |
| Max Splicing Capacity (core) | 108 |
| Packing Information | G.W.:29Kg QTY:8Pcs MEAS.:540*405*620mm |

CITO-CTO-32B



SPECIFICATIONS

| | |
|------------------------------|----------------------------------------------|
| L*W*H (mm) | 420*320*140 |
| Max Splicing Capacity (core) | 32 |
| Packing Information | G.W.:25.8Kg QTY:6Pcs MEAS.:730*440*480mm |

CITO-CTO-48H-1



SPECIFICATIONS

| | |
|------------------------------|----------------------------------------------|
| L*W*H (mm) | 420*320*130 |
| Max Splicing Capacity (core) | 96 |
| Packing Information | G.W.:17.7Kg QTY:6Pcs MEAS.:755*460*480mm |

CITO-CTO-64X-1



SPECIFICATIONS

| | |
|------------------------------|--------------------------------------------|
| L*W*H (mm) | 462*302*123 |
| Max Splicing Capacity (core) | 96 |
| Packing Information | G.W.:21Kg QTY:6Pcs MEAS.:640*495*450mm |

ABOUT FIBER OPTIC CABLES

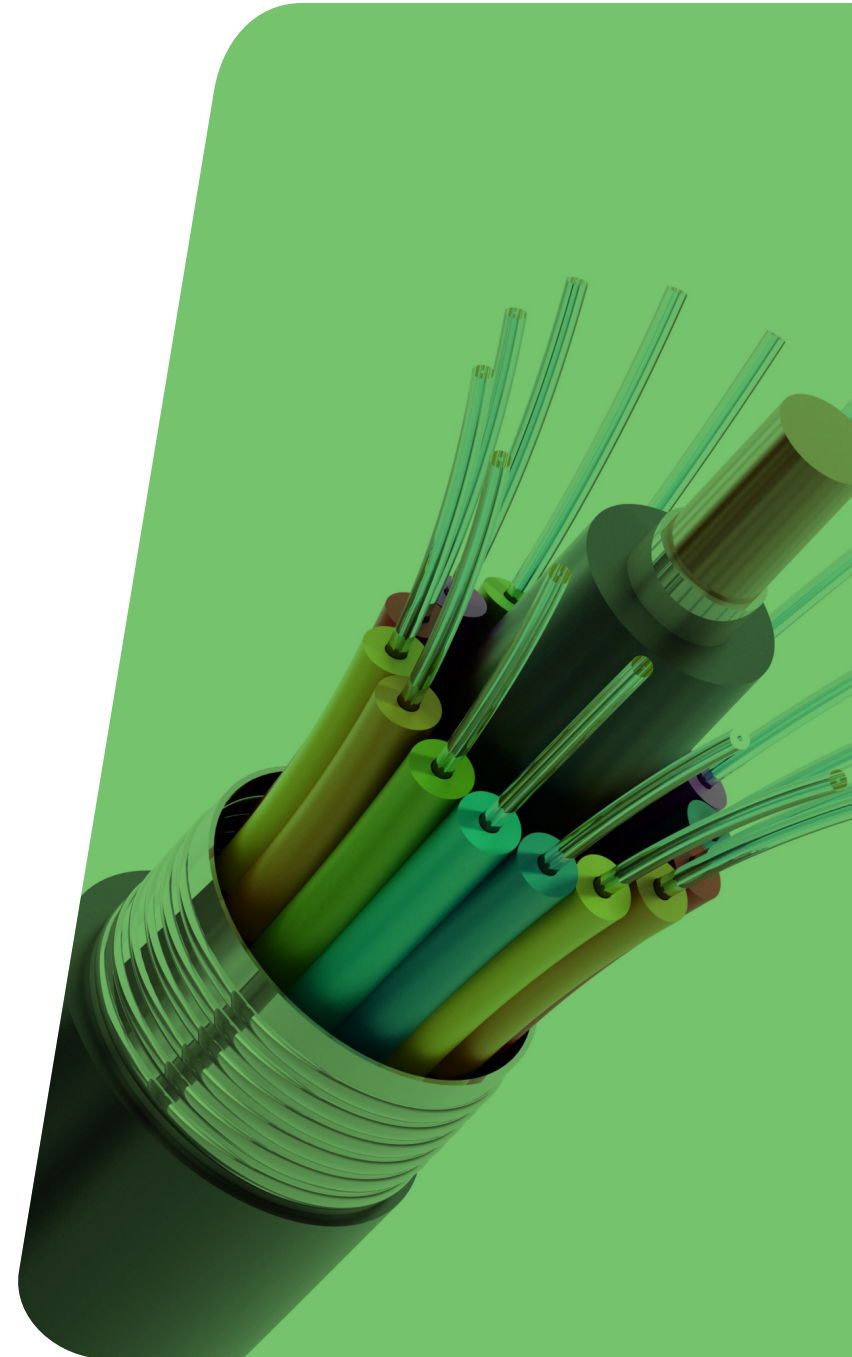
Fiber optic cables harness the power of glass filaments, each proficient in transmitting digital data through modulated light waves. These cables adeptly convey encoded information within a beam of light, traversing a glass tube with efficiency.

CITOCORE's comprehensive cable catalog encompasses variants tailored for overhead, subway, and direct burial applications, featuring both metallic and dielectric structures to suit diverse project requirements.

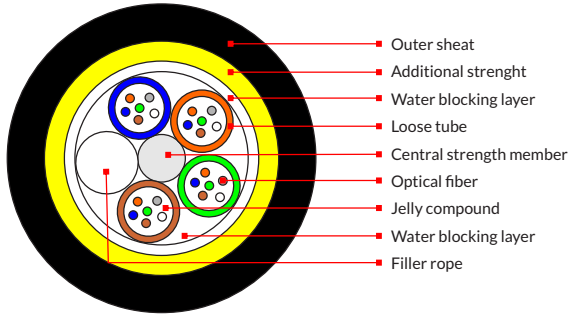
The fibers within each cable may belong to the single-mode category (G652D, G657A1, G657A2, G657B3), as well as multimode (OM1, OM2, OM3, and OM3). All cables adhere to international standards, crafted under rigorous quality controls.

Among CITOCORE's sought-after cable models are self-supporting dielectric cables (ADSS and ASU), armored cables (GYTS, GYTA, GYXTW), and drop cables available in versions with messenger (outside) and without messenger (inside).

CITOCORE takes pride in offering customizable product marking (OEM), ensuring that its cables not only meet but exceed the specific requirements of every project.

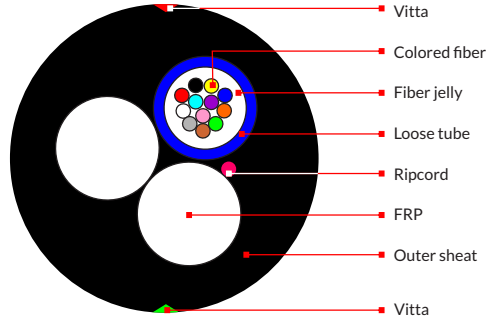


CITO-FO-ADSS



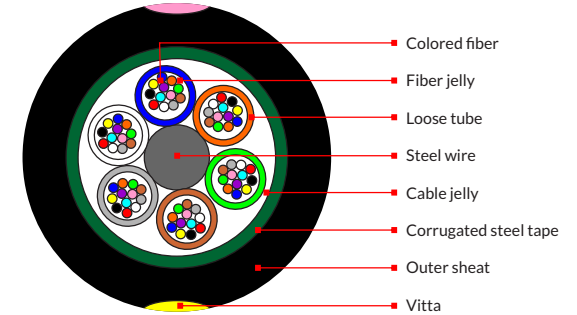
| | |
|------------|------------------------|
| Type | Fiber optic cable ADSS |
| Aplication | Aerial installation |

CITO-FO-ASU



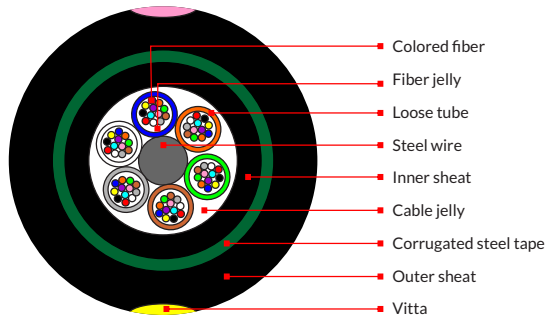
| | |
|------------|-----------------------|
| Type | Fiber optic cable ASU |
| Aplication | Aerial installation |

CITO-FO-GYTS



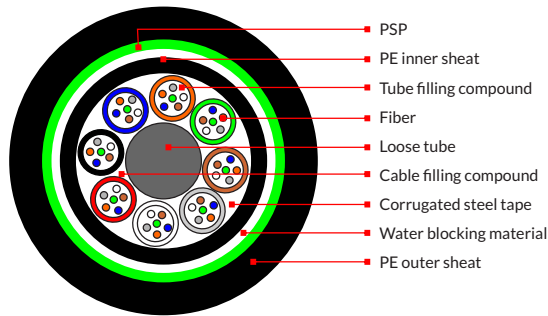
| | |
|------------|------------------------|
| Type | Fiber optic cable GYTS |
| Aplication | Aerial installation |

CITO-FO-GYTY53



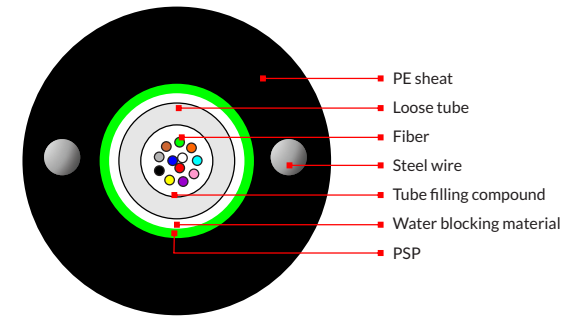
| | |
|------------|--------------------------|
| Type | Fiber optic cable GYTY53 |
| Aplication | Aerial installation |

CITO-FO-GYFTY



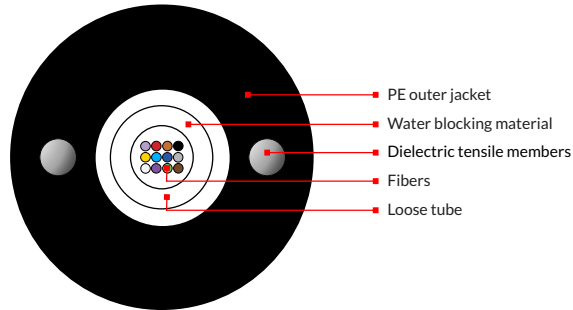
| | |
|------------|-------------------------|
| Type | Fiber optic cable GYFTY |
| Aplication | Aerial installation |

CITO-FO-GYXTW



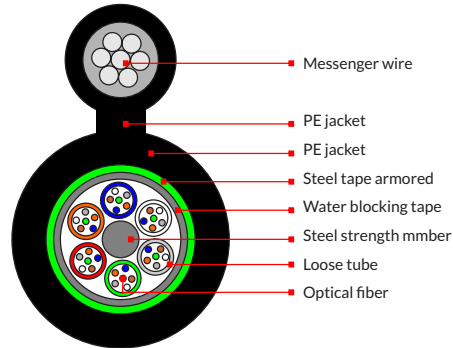
| | |
|------------|--------------------------|
| Type | Fiber optic cable GYTS |
| Aplication | Aerial/Duct installation |

CITO-FO-GYFXY



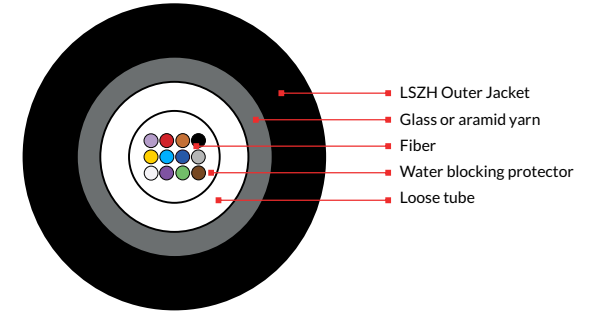
| | |
|-------------|--------------------------|
| Type | Fiber optic cable GYFXY |
| Application | Aerial/Duct installation |

CITO-FO-GYTC8S



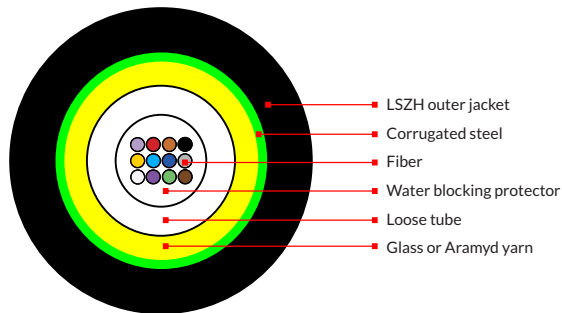
| | |
|-------------|--------------------------|
| Type | Fiber optic cable GYTC8S |
| Application | Aerial installation |

CITO-FO-GJYFXTH-G



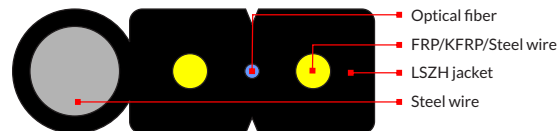
| | |
|-------------|-----------------------------|
| Type | Fiber optic cable GJYFXTH-G |
| Application | Aerial installation |

CITO-FO-GJYFTZX-A



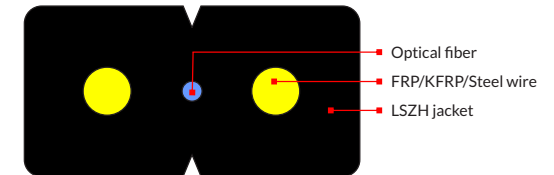
| | |
|-------------|-----------------------------|
| Type | Fiber optic cable GJYFTZX-A |
| Application | Aerial installation |

CITO-FO-GJYXCH



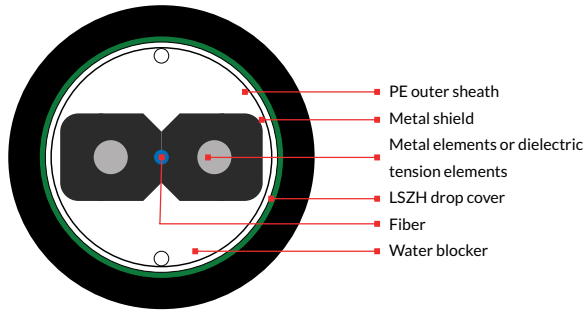
| | |
|-------------|---------------------------------------|
| Type | Outdoor FTTH DROP cable (square type) |
| Application | Aerial installation |

CITO-FO-GJXFH



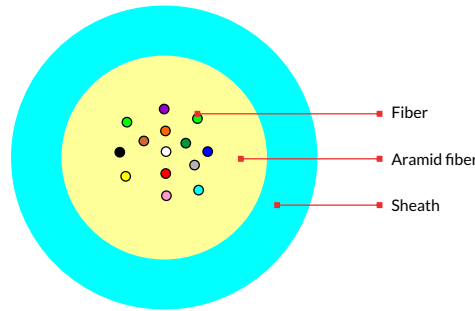
| | |
|-------------|------------------------|
| Type | Indoor FTTH DROP cable |
| Application | Aerial installation |

CITO-FO-GYXFHA



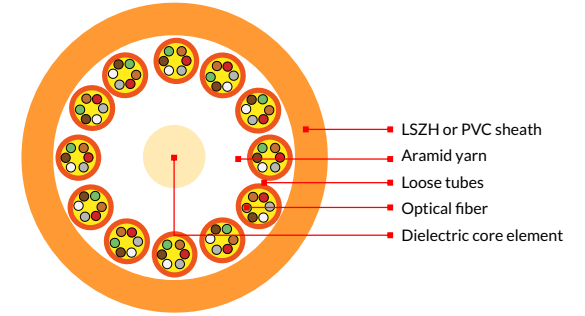
| | |
|-------------|--------------------------|
| Type | Fiber optic cable GYXFHA |
| Application | Duct installation |

CITO-FO-GJFJV-H



| | |
|-------------|---------------------------|
| Type | Fiber optic cable GJFJV-H |
| Application | Indoor installation |

CITO-FO-GJPFJV-H



| | |
|-------------|----------------------------|
| Type | Fiber optic cable GJPFJV-H |
| Application | Indoor installation |



ABOUT ONU & OLT

In a technological landscape that is constantly evolving, Citocore is establishing its position as a visionary leader in the production of EPON systems, boosting connectivity through innovative devices such as Optical Network Units (ONU) and Optical Line Terminals (OLT).

The connectivity revolution begins in homes and businesses, where Citocore introduces its advanced Network Optical Units (ONU). These sleek and efficient devices connect directly to end users, providing a high-speed and stable internet experience. With integrated EPON technology, Citocore's ONU is a centerpiece in the delivery of next-generation connectivity, establishing a robust bridge between users and the network infrastructure.

On the central side of the operation, Citocore deploys Optical Line Terminals (OLTs) that serve as the brains of the network. These advanced control stations manage and direct data traffic efficiently, ensuring fast and reliable delivery of information. The EPON technology in Citocore's OLT is the backbone that enables effective two-way communication between the ONU and the core network, ensuring a cohesive communication infrastructure.

Citocore's innovative approach is not just limited to transmission speed. The company integrates intelligent features such as remote management, advanced diagnostics and automated firmware updates. This not only simplifies maintenance for service providers, but also ensures a smoother, interruption-free end-user experience.

By uniting the efficiency of the ONU at the point of consumption with the sophistication of the OLT at the core of the network, Citocore creates a cohesive EPON ecosystem that redefines connectivity standards. Citocore's vision is not just to provide fast internet; it is to empower communities, businesses and individual users to thrive in the ever-evolving digital age. With its EPON systems via ONU and OLT, Citocore is leading the digital transformation, connecting the world smarter and more efficiently than ever before.



CATV+DATA xPON/GPON/EPON

CITO-ONT-P4/G4/E4

**1GE+CATV**

- Bridge or Route Mode
- Multiple Management Methods
- Support IPv4/IPv6 IGMP snooping and MLD snooping
- CATV Function Manageable
- Compatible With Most OLT Vendors
- Power Supply DC 12V

CITO-ONT-P17/G17/E17

**1GE+3FE+WIFI+CATV**

- 2.4GHz 300Mbps WIFI
- Bridge and Route Mode
- Multiple Management Methods
- Support IPv4/IPv6 IGMP snooping and MLD snooping
- CATV Function Manageable
- IEEE802.11 b/g/n Wireless Protocol
- Compatible With Most OLT Vendors
- Power Supply DC 12V
- 4GE Optional

CITO-ONT-P17D

**1GE+3FE+WIFI+CATV**

- 2.4GHz 300Mbps WIFI
- Bridge and Route Mode
- Multiple Management Methods
- Support IPv4/IPv6 IGMP snooping and MLD snooping
- CATV Function Manageable
- IEEE802.11 b/g/n Wireless Protocol
- Compatible With Most OLT Vendors
- Power Supply DC 12V
- 4GE Optional

CITO-ONT-P18/G18/E18

**1GE+1FE+WIFI+CATV**

- 2.4GHz 300Mbps WIFI
- Bridge and Route Mode
- Multiple Management Methods
- Support IPv4/IPv6 IGMP snooping and MLD snooping
- CATV Function Manageable
- IEEE802.11 b/g/n Wireless Protocol
- Compatible With Most OLT Vendors
- Power Supply DC 12V
- 2GE Optional

CITO-ONT-P19/G19/E19

**1GE+1FE+1POTS+WIFI+CATV**

- 2.4GHz 300Mbps WIFI
- Support voice
- Bridge and Route Mode
- Multiple Management Methods
- Support IPv4/IPv6 IGMP snooping and MLD snooping
- CATV Function Manageable
- IEEE802.11 b/g/n Wireless Protocol
- Compatible With Most OLT Vendors
- Power Supply DC 12V
- 2GE Optional

CITO-ONT-P27/G27/E27

**4GE+1POTS+AC1200+CATV**

- Bridge and Route Mode
- Multiple Management Methods
- Support IPv4/IPv6 IGMP snooping and MLD snooping
- CATV Function Manageable
- IEEE802.11 b/g/n Wireless Protocol
- Compatible With Most OLT Vendors
- Power Supply DC 12V
- Support esymesh

VOICE+DATA xPON/GPON/EPON

CITO-ONT-P5/G5/E5

**1GE+1POTS**

- Bridge or Route Mode
- Multiple Management Methods
- Support IPv4/IPV6 IGMP snooping and MLD snooping
- Compatible With Most OLT Vendors
- Power Supply DC 12V

CITO-ONT-P7

**1GE+1FE+1POTS**

- Bridge or Route Mode
- Multiple Management Methods
- Support IPv4/IPV6 IGMP snooping and MLD snooping
- Support voice
- Compatible With Most OLT Vendors
- Power Supply DC 12V

CITO-ONT-P11/G11/E11

**1GE+1FE+1POTS+WIFI**

- 2.4GHz 300Mbps WIFI
- Support voice
- Bridge and Route Mode
- Multiple Management Methods
- Support IPv4/IPV6 IGMP snooping and MLD snooping
- IEEE802.11 b/g/n Wireless Protocol
- Compatible With Most OLT Vendors
- Power Supply DC 12V

CITO-ONT-P20/G20/E20

**2GE+1POTS+AC1200+WIFI**

- 2.4GHz +5GHz Dual-band WIFI
- Support voice
- 4*6 dBi External Antenna
- Bridge and Route Mode
- Multiple Management Methods
- Support IPv4/IPV6 IGMP snooping and MLD snooping
- IEEE802.11 b/g/n/ac Wireless Protocol
- Compatible With Most OLT Vendors
- Power Supply DC 12V
- Support esymesh

CITO-ONT-P20UD

**2GE+1POTS+AC1200+WIFI**

- 2.4GHz +5GHz Dual-band WIFI
- Support voice
- 2*6 dBi External Antenna
- Bridge and Route Mode
- Multiple Management Methods
- Support IPv4/IPV6 IGMP snooping and MLD snooping
- IEEE802.11 b/g/n/ac Wireless Protocol
- Compatible With Most OLT Vendors
- Power Supply DC 12V
- Support esymesh

CITO-ONT-P24/G24/E24

**4GE+1POTS+AC1200+WIFI**

- 2.4GHz +5GHz Dual-band WIFI
- Support voice
- 4*6 dBi External Antenna
- Bridge and Route Mode
- Multiple Management Methods
- Support IPv4/IPV6 IGMP snooping and MLD snooping
- IEEE802.11 b/g/n/ac Wireless Protocol
- Compatible With Most OLT Vendors
- Power Supply DC 12V
- Support esymesh

CITO-ONT-P24UD



4 GE+1POTS+AC1200+WIFI

- 2.4GHz +5GHz Dual-band WIFI
- Support voice
- 2*5 dBi External Antenna
- Bridge and Route Mode
- Multiple Management Methods
- Support IPv4/IPv6 IGMP snooping and MLD snooping
- IEEE802.11 b/g/n/ac Wireless Protocol
- Compatible With Most OLT Vendors
- Power Supply DC 12V
- Support esymesh

CITO-ONT-P28/G28/E28



4GE+2POTS+AC1200

- 2.4GHz +5GHz Dual-band WIFI
- Support voice
- 4*5 dBi External Antenna
- Bridge and Route Mode
- Multiple Management Methods
- Support IPv4/IPv6 IGMP snooping and MLD snooping
- IEEE802.11 b/g/n/ac Wireless Protocol
- Compatible With Most OLT Vendors
- Power Supply DC 12V
- Support esymesh

CITO-ONT-P30



2GE+1POTS+AX1800+WIFI6

- 2.4GHz +5GHz Dual-band WIFI
- Support voice
- 4*6 dBi External Antenna
- Bridge and Route Mode
- Multiple Management Methods
- Support IPv4/IPv6 IGMP snooping and MLD snooping
- IEEE802.11 b/g/n/ac/ax Wireless Protocol
- Compatible With Most OLT Vendors
- Power Supply DC 12V
- Support esymesh
- 2GE Optional

CITO-ONT-P34



4GE+1POTS+AX1800+WIFI6

- 2.4GHz +5GHz Dual-band WIFI
- Support voice
- 4*6 dBi External Antenna
- Bridge and Route Mode
- Multiple Management Methods
- Support IPv4/IPv6 IGMP snooping and MLD snooping
- IEEE802.11 b/g/n/ac/ax Wireless Protocol
- Compatible With Most OLT Vendors
- Power Supply DC 12V
- Support esymesh
- 4GE Optional

DATAxPON/GPON/EPON

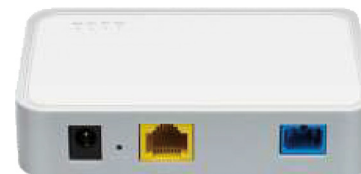
CITO-ONT-P35



4GE+1POTS+AX3000+WIFI6

- 2.4GHz +5GHz Dual-band WIFI
- Support voice
- 5*5 dBi External Antenna
- Bridge and Route Mode
- Multiple Management Methods
- Support IPv4/IPv6 IGMP snooping and MLD snooping
- IEEE802.11 b/g/n/ac/ax Wireless Protocol
- Compatible With Most OLT Vendors
- Power Supply DC 12V
- Support esymesh

CITO-ONT-P3/G3/E3



1GE

- Bridge or Route Mode
- Multiple Management Methods
- Support IPv4/IPv6 IGMP snooping and MLD snooping
- Compatible With Most OLT Vendors
- Power Supply DC 12V

CITO-ONT-P6



1*2.5GE+1GE

- Multiple Management Methods
- Support IPv4/IPv6 IGMP snooping and MLD snooping
- Compatible With Most OLT Vendors
- Power Supply DC 12V

CITO-ONT-P8



1GE+3FE

- Bridge or Route Mode
- Multiple Management Methods
- Support IPv4/IPv6 IGMP snooping and MLD snooping
- Compatible With Most OLT Vendors
- Power Supply DC 12V
- 4GE Optional

CITO-ONT-P10/G10/E10



1GE+1FE+WIFI

- 2.4GHz 300Mbps WIFI
- Bridge and Route Mode
- Multiple Management Methods
- Support IPv4/IPv6 IGMP snooping and MLD snooping
- IEEE802.11 b/g/n 300Mbps Wi-Fi
- Compatible With Most OLT Vendors
- Power Supply DC 12V
- 2GE Optional

CITO-ONT-P14N



1GE+3FE+WIFI

- 2.4GHz 300Mbps WIFI
- Bridge and Route Mode
- Multiple Management Methods
- Support IPv4/IPv6 IGMP snooping and MLD snooping
- IEEE802.11 b/g/n WirelessProtocol
- Compatible With Most OLT Vendors
- Power Supply DC 12V
- 4GE Optional

XGPON/XGSPON

CITO-ONT-P14UD



1GE+3FE+1POTS+WIFI

- 2.4GHz 300Mbps WIFI
- Bridge and Route Mode
- Multiple Management Methods
- Support IPv4/IPv6 IGMP snooping and MLD snooping
- IEEE802.11 b/g/n WirelessProtocol
- Compatible With Most OLT Vendors
- Power Supply DC 12V
- 4GE Optional

CITO-ONT-P50



1*10GE

- Upstream rate 9.953Gbps
- Downstream rate 9.953Gbps
- Multiple Management Methods
- Support IPv4/IPv6 IGMP snooping and MLD snooping
- Compatible With Most OLT Vendors
- Power Supply DC12V

CITO-ONT-P44



1*2.5GE+3GE

- Upstream rate 2.488Gbps
- Downstream rate 9.953Gbps
- Multiple Management Methods
- Support IPv4/IPv6 IGMP snooping and MLD snooping
- Compatible With Most OLT Vendors
- Power Supply DC 12V

CITO-ONT-P46



1*2.5GE+3GE+1POTS+AX3000+WIFI6

- 2.4GHz +5GHz Dual-band WIFI
- Upstream rate 2.488Gbps
- Downstream rate 9.953Gbps
- Support voice
- 4*6 dBi External Antenna
- Bridge and Route Mode
- Multiple Management Methods
- Support IPv4/IPv6 IGMP snooping and MLD snooping
- IEEE802.11 b/g/n/ac/ax Wireless Protocol
- Compatible With Most OLT Vendors
- Power Supply DC 12V
- Support esymesh

CITO-ONT-P55



1*10GE+3GE+1POTS+AX3000+WIFI6

- 2.4GHz +5GHz Dual-band WIFI
- Upstream rate 9.953Gbps
- Downstream rate 9.953Gbps
- Support voice
- 4*6 dBi External Antenna
- Bridge and Route Mode
- Multiple Management Methods
- Support IPv4/IPv6 IGMP snooping and MLD snooping
- IEEE802.11 b/g/n/ac/ax Wireless Protocol
- Compatible With Most OLT Vendors
- Power Supply DC 12V
- Support esymesh

CITO-ONT-P56



1*10GE+1*2.5G+GE+AX3000+AX3000+WIFI6

- 2.4GHz +5GHz Dual-band WIFI
- Upstream rate 9.953Gbps
- Downstream rate 9.953Gbps
- Support voice
- 4*6 dBi External Antenna
- Bridge and Route Mode
- Multiple Management Methods
- Support IPv4/IPv6 IGMP snooping and MLD snooping
- IEEE802.11 b/g/n/ac/ax Wireless Protocol
- Compatible With Most OLT Vendors
- Power Supply DC 12V
- Support esymesh



EPON OLT SERIES

CITO-OLT-LE4

4 PON PORTS OLT
4*EPON+4*GE+4*10G SFP+

- 4*EPON ports
- 4*1000Base-T Uplink Ports
- 4*1GE(SFP)/10GE(SFP+) Uplink Ports
- Maximum support 256 ONT(1:64 splitter)
- Fully Compatible IEEE802.3ah Standard and China CTC2.1/3.0 standard
- Supports EMS & Web Management
- Supports Dual Power Supply(Optional)
- Maximum supported distance of 20KM
- Standard 1U size



CITO-OLT-LE16

16 PON PORTS OLT
16*EPON+4*GE+4*10G SFP+

- 16*EPON ports
- 4*1000Base-T Uplink Ports
- 4*1GE(SFP)/10GE(SFP+) Uplink Ports
- Maximum support 1024 ONT(1:64 splitter)
- Fully Compatible IEEE802.3ah Standard and China CTC2.1/3.0 standard
- Supports EMS & Web Management
- Supports Dual Power Supply(Optional)
- Maximum supported distance of 20KM
- Standard 1U size



CITO-OLT-LE8

8 PON PORTS OLT
8*EPON+4*GE+4*10G SFP+

- 8*EPON ports
- 4*1000Base-T Uplink Ports
- 4*1GE(SFP)/10GE(SFP+) Uplink Ports
- Maximum support 512 ONT(1:64 splitter)
- Fully Compatible IEEE802.3ah Standard and China CTC2.1/3.0 standard
- Supports EMS & Web Management
- Supports Dual Power Supply(Optional)
- Maximum supported distance of 20KM
- Standard 1U size



CHASSIS OLT SERIES

CITO-OLT-L20

xPON OLT

- 2U high, 7 slots, 2 uplink MCCs, 2 service card slots available
- Up to 16 XG(S)-PON Combo interfaces
- Up to 12*10GE up link interfaces.
- Each PON interface supports up to 256 GPON/XG-PON/XGS-PON ONUs
- Accessing broadband, voice, IPTV
- Link aggregation, DHCP, interface isolation
- Uplink MCC1+1 load balancing, hot-swapping for all cards
- Complete ACL, including L2, L3, L4, and user-defined ACLs



CITO-OLT-L50

xPON OLT

- EPON/GPON/10G-EPON Line Board
- IPv4/IPv6 Dual Stacks
- IGMPv2/v3
- IGMP Proxy/Snooping
- 4.8Tbps Backplane Capacity
- 1.92 Tbps Switching Capacity and 256K MAC Addresses
- Standard 5U size



CITO-OLT-L90

xPON OLT

- 9U chassis, high-density line card
- 1+1 main control redundancy, 1+1 power redundancy
- Hot-swappable fan tray
- Max 12 slots: 8*service slot, 2*main control board slot, 2*uplink slot
- Up to 128 EPON/GPON and 8*10GE ports
- 1Tbps
- IPv4/IPv6 and MPLS
- Power consumption <850W



GPON OLT SERIES

CITO-OLT-L8


8 PON PORTS OLT
8*GPON+4*GE+4*10G SFP+

- 8*GPON ports
- 4*1000Base-T Uplink Ports
- 4*1GE(SFP)/10GE(SFP+) Uplink Ports
- Maximum support 1024 ONT(1:128 splitter)
- Fully Compatible ITU-T G.984.x Standard
- Supports EMS & Web Management
- Supports Dual Power Supply(Optional)
- Maximum supported distance of 20KM
- Standard 1U size

CITO-OLT-L16


16 PON PORTS OLT
16*GPON+4*GE+4*10G SFP+

- 16*GPON ports
- 4*1000Base-T Uplink Ports
- 4*1GE(SFP)/10GE(SFP+) Uplink Ports
- Maximum support 2048 ONT(1:128 splitter)
- Fully Compatible ITU-T G.984.x Standard
- Supports EMS & Web Management
- Supports Dual Power Supply(Optional)
- Maximum supported distance of 20KM
- Standard 1U size

XG(S)PON OLT SERIES

CITO-OLT-XL8


8 PON PORTS OLT
8*XG(S)PON+2*100G SFP

- 8*XG(S)PON ports
- 2*100(SFP) Uplink Ports
- Maximum support 1024 ONT(1:128 splitter)
- Fully Compatible ITU-T G.987.x/G.988 Standard
- Supports EMS & Web Management
- Supports Dual Power Supply(Optional)
- Maximum supported distance of 20KM
- Standard 1U size

CITO-OLT-X L16


16 PON PORTS OLT
16*XG(S)PON+2*100G SFP

- 16*XG(S)PON ports
- 2*100(SFP) Uplink Ports
- Maximum support 2048 ONT(1:128 splitter)
- Fully Compatible ITU-T G.987.x/G.988 Standard
- Supports EMS & Web Management
- Supports Dual Power Supply(Optional)
- Maximum supported distance of 20KM
- Standard 1U size

OUTDOOR OLT SERIES

CITO-OLT-LE40/L40


4 PON PORTS OLT
4*E/GPON+2GE SFP+2*10G SFP+

- 4*E/GPON ports
- 2*GE SFP Uplink Ports
- 2*10GE(SFP+) Uplink Ports
- Supports EDFA
- Maximum 1:128 splitting ratio
- Supports EMS & Web Management
- Maximum supported distance of 40KM
- It supports a hybrid network of different types of ONUs
- Dimensions 385*307*180mm

CITO-OLT-LE80/L80


8 PON PORTS OLT
8*E/GPON+2GE SFP+2*10G SFP+

- 8*E/GPON ports
- 2*GE SFP Uplink Ports
- 2*10GE(SFP+) Uplink Ports
- Supports EDFA
- Maximum 1:128 splitting ratio
- Supports EMS & Web Management
- Maximum supported distance of 40KM
- It supports a hybrid network of different types of ONUs
- Dimensions 385*307*180mm

ABOUT FIBER OPTIC SPLICE CLOSURE

CITOCORE stands at the forefront with an extensive array of fiber optic splicing and distribution products, continually expanding to meet evolving market demands.

Within our splice box collection, both horizontal and vertical dome-type boxes are featured prominently.

Horizontal models prove ideal for fiber optic links, catering to aerial and subway applications. Crafted from rigid plastic resistant to UV rays, humidity, and shocks, these models can accommodate a maximum of 288 splices. They serve as versatile components for termination, splicing, and/or segregation in primary, secondary, or end-point networks.

Similar to their horizontal counterparts, dome-type models are strategically designed to shield splices from physical threats, whether situated underground, in pits, or along overhead lines.

Diverse models within this category offer variations in capacity, closure type (heat-shrinkable or mechanical), plastic composition, fiber organization, and other pertinent variables. At CITOCORE, we ensure that our splice boxes not only meet but exceed the stringent requirements of diverse applications.



CITO-DOMO-BDH-A4



| SPECIFICATIONS | |
|-----------------|-----------------|
| Type of Closure | Heat shrinkable |
| Capacity | 96FO |
| Number of Ports | 4 |
| Trays | 4 |

CITO-DOMO-BDH-A5



| SPECIFICATIONS | |
|-----------------|-----------------|
| Type of Closure | Heat shrinkable |
| Capacity | 96FO |
| Number of Ports | 5 |
| Trays | 4 |

CITO-DOMO-BDH-B5



| SPECIFICATIONS | |
|-----------------|-----------------|
| Type of Closure | Heat shrinkable |
| Capacity | 96FO |
| Number of Ports | 5 |
| Trays | 4 |

CITO-DOMO-BDH-C5



| SPECIFICATIONS | |
|-----------------|-----------------|
| Type of Closure | Heat shrinkable |
| Capacity | 288FO |
| Number of Ports | 5 |
| Trays | 6 |

CITO-DOMO-BDH-D7



| SPECIFICATIONS | |
|-----------------|-----------------|
| Type of Closure | Heat shrinkable |
| Capacity | 240FO |
| Number of Ports | 7 |
| Trays | 10 |

CITO-DOMO-BDH-H7



| SPECIFICATIONS | |
|-----------------|-----------------|
| Type of Closure | Heat shrinkable |
| Capacity | 288FO |
| Number of Ports | 7 |
| Trays | 12 |

CITO-DOMO-BDH-9007



| SPECIFICATIONS | |
|-----------------|-----------------|
| Type of Closure | Heat shrinkable |
| Capacity | 288FO |
| Number of Ports | 8 |
| Trays | 4 |

CITO-DOMO-BDH-A9



| SPECIFICATIONS | |
|-----------------|-----------------|
| Type of Closure | Heat shrinkable |
| Capacity | 144FO |
| Number of Ports | 9 |
| Trays | 4 |

CITO-DOMO-BDH-C17



SPECIFICATIONS

| | |
|-----------------|-----------------|
| Type of Closure | Heat shrinkable |
| Capacity | 288FO |
| Number of Ports | 17 |
| Trays | 24 |

CITO-DOMO-BDH-D5



SPECIFICATIONS

| | |
|-----------------|-----------------|
| Type of Closure | Heat shrinkable |
| Capacity | 144FO |
| Number of Ports | 5 |
| Trays | 4 |

CITO-DOMO-BDH-D7



SPECIFICATIONS

| | |
|-----------------|-----------------|
| Type of Closure | Heat shrinkable |
| Capacity | 240FO |
| Number of Ports | 7 |
| Trays | 10 |

CITO-DOMO-BDH-D576



SPECIFICATIONS

| | |
|-----------------|-----------------|
| Type of Closure | Heat shrinkable |
| Capacity | 960FO |
| Number of Ports | 11 |
| Trays | 40 |

CITO-DOMO-BDH-E5



SPECIFICATIONS

| | |
|-----------------|-----------------|
| Type of Closure | Heat shrinkable |
| Capacity | 144FO |
| Number of Ports | 5 |
| Trays | 6 |

CITO-DOMO-BDH-E8



SPECIFICATIONS

| | |
|-----------------|-----------------|
| Type of Closure | Heat shrinkable |
| Capacity | 288FO |
| Number of Ports | 7 |
| Trays | 8 |

CITO-DOMO-BDH-H7



SPECIFICATIONS

| | |
|-----------------|-----------------|
| Type of Closure | Heat shrinkable |
| Capacity | 288FO |
| Number of Ports | 7 |
| Trays | 12 |

CITO-DOMO-BDH-J4



SPECIFICATIONS

| | |
|-----------------|-----------------|
| Type of Closure | Heat shrinkable |
| Capacity | 48FO |
| Number of Ports | 4 |
| Trays | 4 |

CITO-DOMO-BDH-M6



| SPECIFICATIONS | |
|-----------------|-----------------|
| Type of Closure | Heat shrinkable |
| Capacity | 288FO |
| Number of Ports | 6 |
| Trays | 12 |

CITO-DOMO-BDH-M9



| SPECIFICATIONS | |
|-----------------|-----------------|
| Type of Closure | Heat shrinkable |
| Capacity | 144FO |
| Number of Ports | 9 |
| Trays | 6 |

CITO-DOMO-BDH-M9AX



| SPECIFICATIONS | |
|-----------------|-----------------|
| Type of Closure | Heat shrinkable |
| Capacity | 288FO |
| Number of Ports | 7 |
| Trays | 4 |

CITO-DOMO-BDH-N5



| SPECIFICATIONS | |
|-----------------|-----------------|
| Type of Closure | Heat shrinkable |
| Capacity | 144FO |
| Number of Ports | 5 |
| Trays | 6 |

CITO-DOMO-BDH-O5



| SPECIFICATIONS | |
|-----------------|-----------------|
| Type of Closure | Heat shrinkable |
| Capacity | 144FO |
| Number of Ports | 5 |
| Trays | 6 |

CITO-DOMO-BDH-5609



| SPECIFICATIONS | |
|-----------------|-----------------|
| Type of Closure | Heat shrinkable |
| Capacity | 48FO |
| Number of Ports | 5 |
| Trays | 12 |

CITO-DOMO-BDM-B4



| SPECIFICATIONS | |
|-----------------|------------|
| Type of Closure | Mechanical |
| Capacity | 48FO |
| Number of Ports | 4 |
| Trays | 4 |

CITO-DOMO-BDM-C5



| SPECIFICATIONS | |
|-----------------|------------|
| Type of Closure | Mechanical |
| Capacity | 144FO |
| Number of Ports | 5 |
| Trays | 6 |

CITO-DOMO-BDM-F6



SPECIFICATIONS

| | |
|-----------------|------------|
| Type of Closure | Mechanical |
| Capacity | 240FO |
| Number of Ports | 6 |
| Trays | 4 |

CITO-DOMO-BDM-G6



SPECIFICATIONS

| | |
|-----------------|------------|
| Type of Closure | Mechanical |
| Capacity | 288FO |
| Number of Ports | 6 |
| Trays | 4 |

CITO-DOMO-BDM-Z5S12



SPECIFICATIONS

| | |
|-----------------|------------|
| Type of Closure | Mechanical |
| Capacity | 552FO |
| Number of Ports | 5 |
| Trays | 48 |

CITO-DOMO-BDH-M1AX



SPECIFICATIONS

| | |
|-----------------|-----------------|
| Type of Closure | Heat shrinkable |
| Capacity | 144FO |
| Number of Ports | 9 |
| Trays | 6 |

CITO-DOMO-BDH-M6AX



SPECIFICATIONS

| | |
|-----------------|-----------------|
| Type of Closure | Heat shrinkable |
| Capacity | 96FO |
| Number of Ports | 5 |
| Trays | 4 |

CITO-DOMO-BDH-M9AX



SPECIFICATIONS

| | |
|-----------------|-----------------|
| Type of Closure | Heat shrinkable |
| Capacity | 288FO |
| Number of Ports | 7 |
| Trays | 12 |

CITO-DOMO-BDM-M1AX



SPECIFICATIONS

| | |
|-----------------|------------|
| Type of Closure | Mechanical |
| Capacity | 144FO |
| Number of Ports | 5 |
| Trays | 6 |

CITO-DOMO-BDH-M2AX



SPECIFICATIONS

| | |
|-----------------|-----------------|
| Type of Closure | Heat shrinkable |
| Capacity | 144FO |
| Number of Ports | 9 |
| Trays | 6 |

CITO-DOMO-BDM-M6



| SPECIFICATIONS | |
|-----------------|------------|
| Type of Closure | Mechanical |
| Capacity | 144FO |
| Number of Ports | 9 |
| Trays | 6 |

CITO-DOMO-BDM-5822



| SPECIFICATIONS | |
|-----------------|------------|
| Type of Closure | Mechanical |
| Capacity | 360FO |
| Number of Ports | 8 |
| Trays | 30 |

CITO-DOMO-BDM-M10AX



| SPECIFICATIONS | |
|-----------------|------------|
| Type of Closure | Mechanical |
| Capacity | 432FO |
| Number of Ports | 9 |
| Trays | 4 |

CITO-DOMO-BIM-A6



| SPECIFICATIONS | |
|-----------------|------------|
| Type of Closure | Mechanical |
| Capacity | 96FO |
| Number of Ports | 6 |
| Trays | 4 |

CITO-DOMO-BIM-B6



| SPECIFICATIONS | |
|-----------------|------------|
| Type of Closure | Mechanical |
| Capacity | 96FO |
| Number of Ports | 6 |
| Trays | 4 |

CITO-DOMO-BIM-C8



| SPECIFICATIONS | |
|-----------------|------------|
| Type of Closure | Mechanical |
| Capacity | 96FO |
| Number of Ports | 8 |
| Trays | 4 |

CITO-DOMO-BIM-D6



| SPECIFICATIONS | |
|-----------------|------------|
| Type of Closure | Mechanical |
| Capacity | 96FO |
| Number of Ports | 6 |
| Trays | 4 |

CITO-DOMO-BIM-E6



| SPECIFICATIONS | |
|-----------------|------------|
| Type of Closure | Mechanical |
| Capacity | 96FO |
| Number of Ports | 6 |
| Trays | 4 |

CITO-DOMO-BIM-F4



SPECIFICATIONS

| | |
|-----------------|------------|
| Type of Closure | Mechanical |
| Capacity | 48FO |
| Number of Ports | 4 |
| Trays | 2 |

CITO-DOMO-BIM-F6



SPECIFICATIONS

| | |
|-----------------|------------|
| Type of Closure | Mechanical |
| Capacity | 192FO |
| Number of Ports | 8 |
| Trays | 8 |

CITO-DOMO-BIM-B6



SPECIFICATIONS

| | |
|-----------------|------------|
| Type of Closure | Mechanical |
| Capacity | 96FO |
| Number of Ports | 2 |
| Trays | 4 |

CITO-DOMO-BIM-K288S24-C



SPECIFICATIONS

| | |
|-----------------|------------|
| Type of Closure | Mechanical |
| Capacity | 96FO |
| Number of Ports | 8 |
| Trays | 6 |

CITO-DOMO-BIM-N6



SPECIFICATIONS

| | |
|-----------------|------------|
| Type of Closure | Mechanical |
| Capacity | 288FO |
| Number of Ports | 6 |
| Trays | 12 |

CITO-DOMO-BIM-P8



SPECIFICATIONS

| | |
|-----------------|------------|
| Type of Closure | Mechanical |
| Capacity | 48FO |
| Number of Ports | 8 |
| Trays | 2 |

CITO-DOMO-BIM-Q4



SPECIFICATIONS

| | |
|-----------------|------------|
| Type of Closure | Mechanical |
| Capacity | 288FO |
| Number of Ports | 4 |
| Trays | 6 |

CITO-DOMO-BIM-R4



SPECIFICATIONS

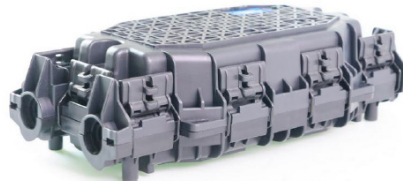
| | |
|-----------------|------------|
| Type of Closure | Mechanical |
| Capacity | 96FO |
| Number of Ports | 4 |
| Trays | 4 |

CITO-DOMO-BDM-S4



| SPECIFICATIONS | |
|-----------------|------------|
| Type of Closure | Mechanical |
| Capacity | 96FO |
| Number of Ports | 4 |
| Trays | 4 |

CITO-DOMO-BDM-T4



| SPECIFICATIONS | |
|-----------------|------------|
| Type of Closure | Mechanical |
| Capacity | 96FO |
| Number of Ports | 4 |
| Trays | 4 |

CITO-DOMO-BDM-H120-01



| SPECIFICATIONS | |
|-----------------|------------|
| Type of Closure | Mechanical |
| Capacity | 120FO |
| Number of Ports | 6 |
| Trays | 4 |



ABOUT PASSIVE COMPONENTS

In a passive optical network (PON), passive components are those elements that do not require power between the Optical Line Termination (OLT) and the Optical Network Termination Unit (ONT) or Optical Network Unit (ONU).

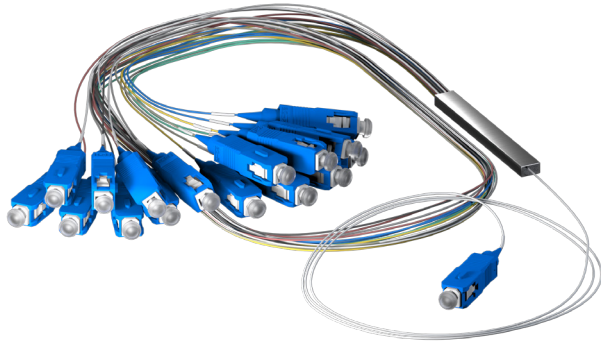
For this reason, a PON network is more attractive, as the design and installation costs of a passive optical network are more attractive compared to a traditional metallic network.

The universe of passive components includes different elements, for example, adapters, attenuators, mechanical connectors, patch cords, pigtails, among others. One of the most important elements is the optical splitter, in charge of splitting the optical signal and guaranteeing the continuity of the signal in its different branches.

CITOCORE has a catalog in continuous development, adjusting its products to the new market requirements and developing technologies for the new generation of optical networks.



MICRO TYPE PLC SPLITTER



FEATURES

- Compact design
- Low insertion loss and low PDL
- High reliability
- High channel counts
- Wide wavelength range
- Large operating and temperature range
- Customized packaging and configuration
- Full Telcordia GR1209/1221 qualifications

SC/APC TO SC/APC DUPLEX SINGLE MODE FIBER OPTIC ADAPTER WITH FLANGE



| SPECIFICATIONS | |
|----------------|--------------|
| Connector Type | SC - SC |
| Polish Type | APC |
| Insertion Loss | ≤0.2dB |
| Mounting Type | Full flanged |
| Body Style | Duplex |
| Fiber Mode | Singlemode |
| Durability | 1000 times |

SC/APC TO SC/APC SIMPLEX SINGLE MODE FIBER OPTIC ADAPTER WITH FLANGE



| SPECIFICATIONS | |
|----------------|--------------|
| Connector Type | SC - SC |
| Polish Type | APC |
| Insertion Loss | ≤0.2dB |
| Mounting Type | Full flanged |
| Body Style | Simplex |
| Fiber Mode | Singlemode |
| Durability | 1000 times |

SC/APC TO SC/APC DUPLEX SINGLE MODE FIBER OPTIC ADAPTER WITH FLANGE



| SPECIFICATIONS | |
|----------------|--------------|
| Connector Type | LC - LC |
| Polish Type | UPC |
| Insertion Loss | ≤0.2dB |
| Mounting Type | Full flanged |
| Body Style | Duplex |
| Fiber Mode | Singlemode |
| Durability | 1000 times |

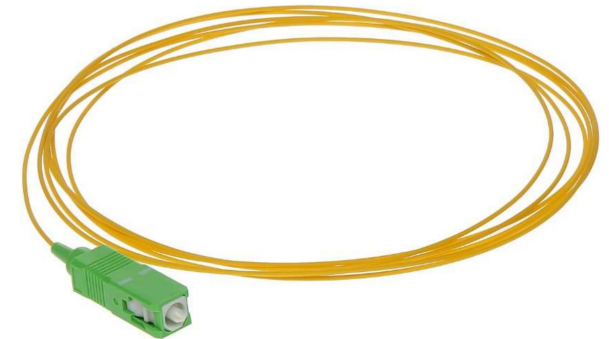
FIBER OPTIC PATCHCORD



FEATURES

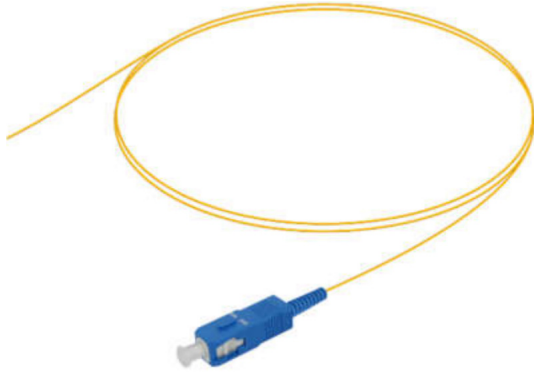
- Compact Design.
- Low Insertion Loss and High Return Loss.
- Compliance with industry standards for optical, mechanical and environmental performance.
- Wide wavelength range.
- Wide operating temperature range.
- Customized configuration.
- IEC, EIA/TIA and GR-326-CORE compliance.
- Single-mode (8/125) and multimode (50/125 or 62.5/125) fiber options.
- Simplex and duplex cables available.

FIBER OPTIC PIGTAIL



| SPECIFICATIONS | |
|----------------------------------|----------------------------------------------------------------------------------------------------------------------|
| Connector A - Type and Polishing | SC/APC |
| Optical Fiber | 900um buffer - Singlemode (9/125um G.652D - Standard, G.655 or G.657A), or Multimode (50/125um or 62.5/125um) fibers |
| Fiber Diameter | 900um or 2mm or 3mm |

FIBER OPTIC PIGTAIL



FEATURES

- Compact design.
- Low insertion loss and high return loss.
- Conform to ITU-T G.652D or others.
- High reliability suitable for both single mode and multi-mode.
- Wide wavelength range.
- Large operation temperature range.
- Customized configuration.
- IEC, EIA/TIA and GR-326-COREcompliant.

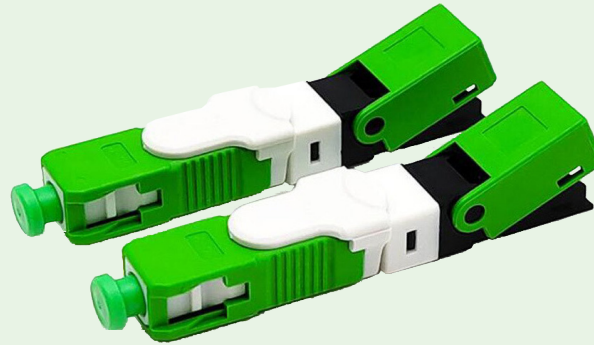
PLC CASSETTE TYPE



FEATURES

- Compact design.
- Low insertion loss and low PDL.
- High reliability.
- High number of channels.
- Wide wavelength range.
- Large operation temperature range.
- Packaging and configuration setup.
- Complete Telcordia GR1209/1221 qualifications.

FIELD ASSEMBLY OPTICAL CONNECTOR



SPECIFICATIONS

| | SC/UPC | SC/APC |
|-----------|-------------------------|-------------------------|
| Connector | SC/UPC | SC/APC |
| Model | CITO-FASTCONEC-250D-UPC | CITO-FASTCONEC-250D-APC |
| Dimension | 52 x 9 x 8.1mm | |

FIELD ASSEMBLY OPTICAL CONNECTOR



SPECIFICATIONS

| | SC/UPC | SC/APC |
|-----------|-----------------------|-----------------------|
| Connector | SC/UPC | SC/APC |
| Model | CITO-FASTCONEC-01-UPC | CITO-FASTCONEC-01-APC |
| Dimension | 60.3 x 9.8 x 9.8mm | |

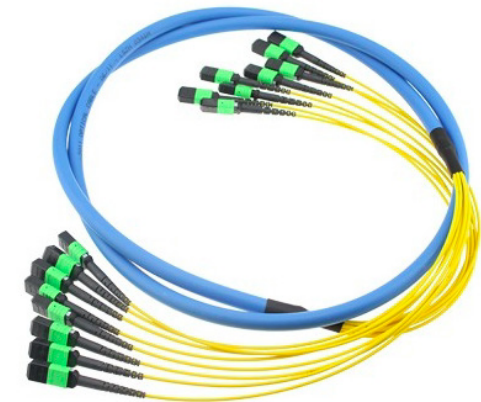
SPLITTER LGX



FEATURES

- Compact design.
- Customizable optical split ratio.
- Customizable number of channels.
- Low insertion loss and low PDL.
- High reliability.
- High number of channels.
- Wide wavelength range.
- Wide operating range.
- Packaging and configuration.

CABLE TRUNK MPO-MPO



FEATURES

- Available from 12 to 144F fiber optic cable.
- Optional pull eye design to suit different installation environments.
- Round and minicore cable structure to eliminate kink sensitivity.
- Available in multimode(MO1 62,5/125um, OM2/OM3/OM4 50/125um in 10/40/100G) and single-mode(G652D, G657A1, etc.).

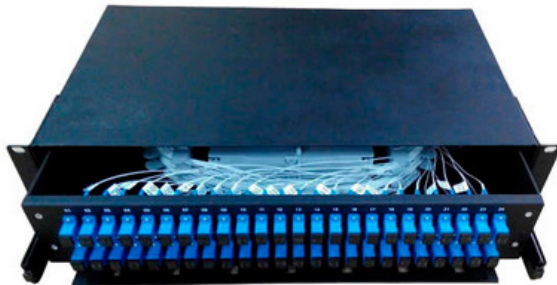
CABLE TRUNK MPO-MPO



FEATURES

- Available from 12 to 144F fiber optic cable.
- Optional pull eye design to suit different installation environments.
- Round and minicore cable structure to eliminate kink sensitivity.
- Available in multimode(MO1 62,5/125um, OM2/OM3/OM4 50/125um in 10/40/100G) and single-mode(G652D, G657A1, etc.).

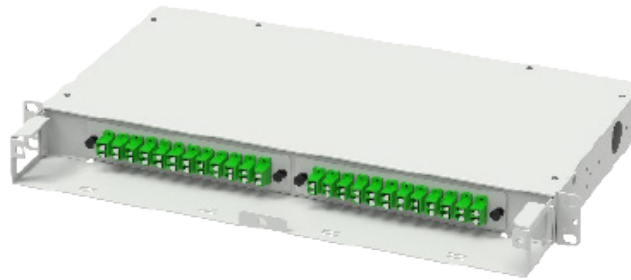
CITO-ODF-P2



| SPECIFICATIONS | |
|-------------------|------------|
| Size (mm) | 482x250x88 |
| Max Capacity (FO) | 144 |

OPTICAL DISPENSERS (ODF)

CITO-ODF-P2-C



| SPECIFICATIONS | |
|-------------------|------------|
| Size (mm) | 484x275x44 |
| Max Capacity (FO) | 48 |

CITO-ODF-P1

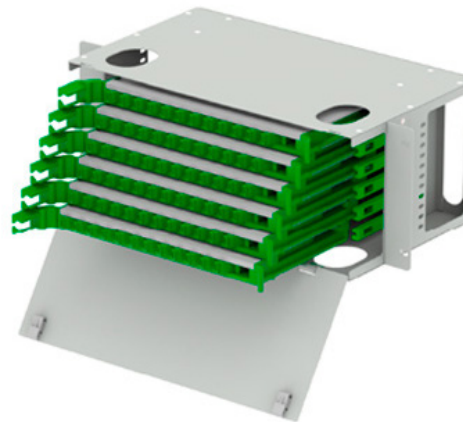


| SPECIFICATIONS | |
|-------------------|-------------|
| Size (mm) | 482x276x200 |
| Max Capacity (FO) | 72 |

CITO-ODF-P5



| SPECIFICATIONS | |
|-------------------|-------------|
| Size (mm) | 420*320*140 |
| Max Capacity (FO) | 32 |



| SPECIFICATIONS | |
|-------------------|-------------|
| Size (mm) | 434x482x255 |
| Max Capacity (FO) | 192 |

OPTICAL DISPENSERS (ODF)

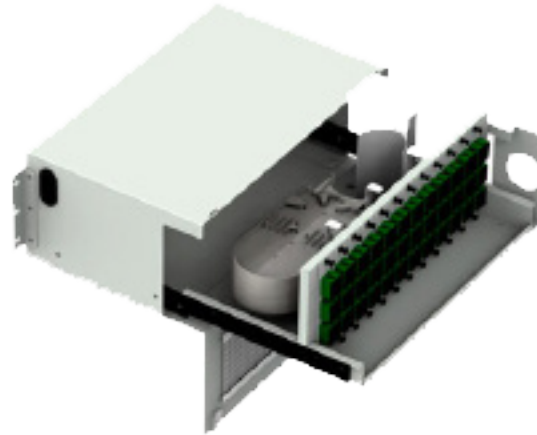
CITO-ODF-P13



SPECIFICATIONS

| | |
|-------------------|---------------|
| Size (mm) | 482.6x275x594 |
| Max Capacity (FO) | 252 |

CITO-ODF-S3



SPECIFICATIONS

| | |
|-------------------|---------------|
| Size (mm) | 171.2x482x278 |
| Max Capacity (FO) | 144 |

CITO-ODF-S12



SPECIFICATIONS

| | |
|-------------------|------------|
| Size (mm) | 482x240x88 |
| Max Capacity (FO) | 96 |

CITO-ODF-SX4



SPECIFICATIONS

| | |
|-------------------|-------------|
| Size (mm) | 380x482x176 |
| Max Capacity (FO) | 144 |

CITO-ODF-P10



SPECIFICATIONS

| | |
|-------------------|----------------|
| Size (mm) | 482.6x365.5x44 |
| Max Capacity (FO) | 48 |

CITO-ODF-P11

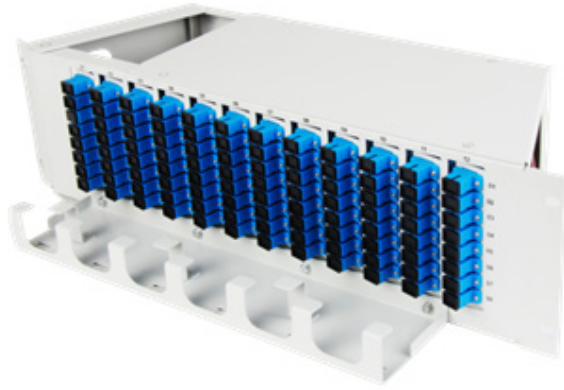


SPECIFICATIONS

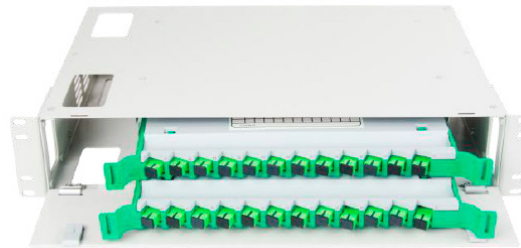
| | |
|-------------------|--------------|
| Size (mm) | 482.6x280x44 |
| Max Capacity (FO) | 30 |

OPTICAL DISPENSERS (ODF)

CITO-ODF-P12



CITO-ODF-P13



CITO-ODF-S14

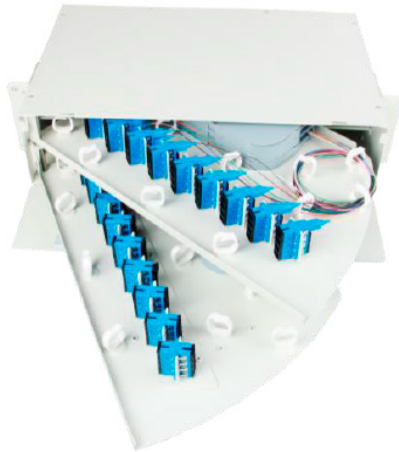


| SPECIFICATIONS | |
|-------------------|-----------------|
| Size (mm) | 482.6x230x127.2 |
| Max Capacity (FO) | 96 |

| SPECIFICATIONS | |
|-------------------|---------------|
| Size (mm) | 482.6x275x594 |
| Max Capacity (FO) | 252 |

| SPECIFICATIONS | |
|-------------------|------------|
| Size (mm) | 482x300x44 |
| Max Capacity (FO) | 24 |

CITO-ODF-S15



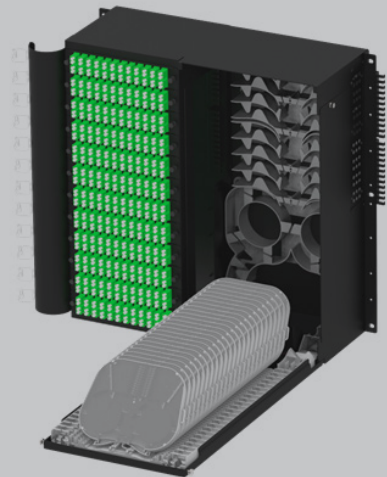
CITO-ODF-S18



| SPECIFICATIONS | |
|-------------------|---------------|
| Size (mm) | 482.6x270x108 |
| Max Capacity (FO) | 72 |

| SPECIFICATIONS | |
|-------------------|------------|
| Size (mm) | 482x300x44 |
| Max Capacity (FO) | 24 |

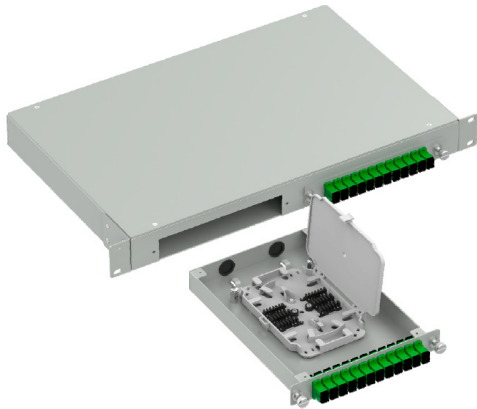
CITO-ODF-S7-576A



| SPECIFICATIONS | |
|-------------------|-------------|
| Size (mm) | 470x482x190 |
| Max Capacity (FO) | 288 |

OPTICAL DISTRIBUTORS (ODF)

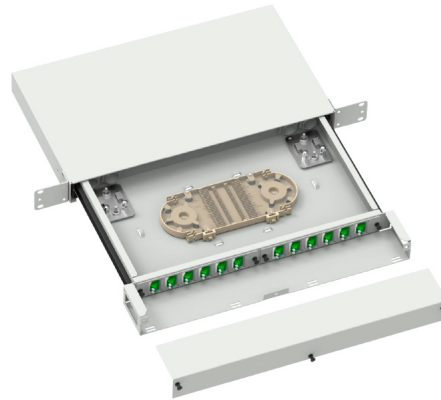
CITO-ODF-S18-V2



SPECIFICATIONS

| | |
|-------------------|------------|
| Size (mm) | 482x200x44 |
| Max Capacity (FO) | 24 |

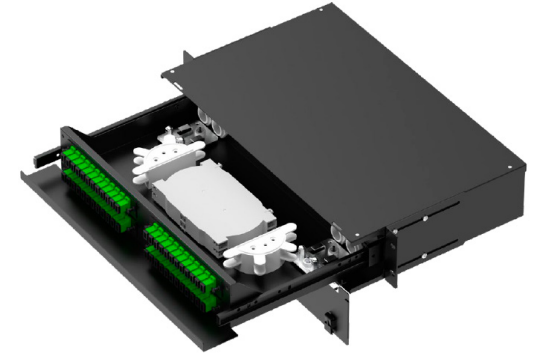
CITO-ODF-S2-F24-LC



SPECIFICATIONS

| | |
|-------------------|------------|
| Size (mm) | 482x340x44 |
| Max Capacity (FO) | 24 |

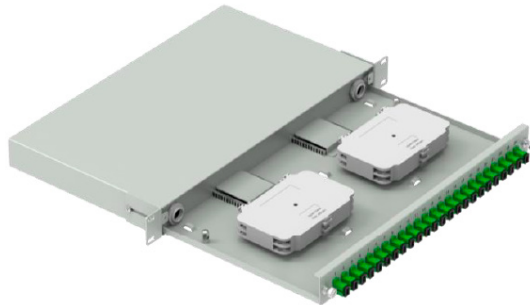
CITO-ODF-S21-48



SPECIFICATIONS

| | |
|-------------------|------------|
| Size (mm) | 482x310x88 |
| Max Capacity (FO) | 48 |

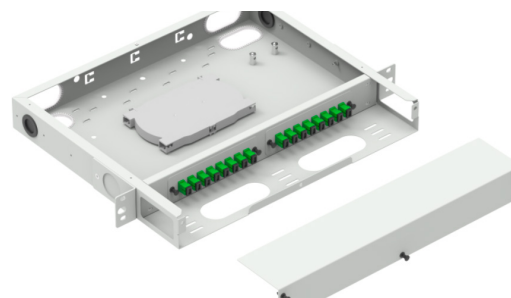
CITO-ODF-S19



SPECIFICATIONS

| | |
|-------------------|------------|
| Size (mm) | 482x250x44 |
| Max Capacity (FO) | 24 |

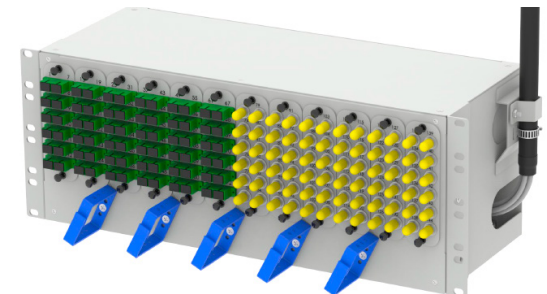
CITO-ODF-SX1-16



SPECIFICATIONS

| | |
|-------------------|--------------|
| Size (mm) | 482.6x360x53 |
| Max Capacity (FO) | 24 |

CITO-ODF-S14

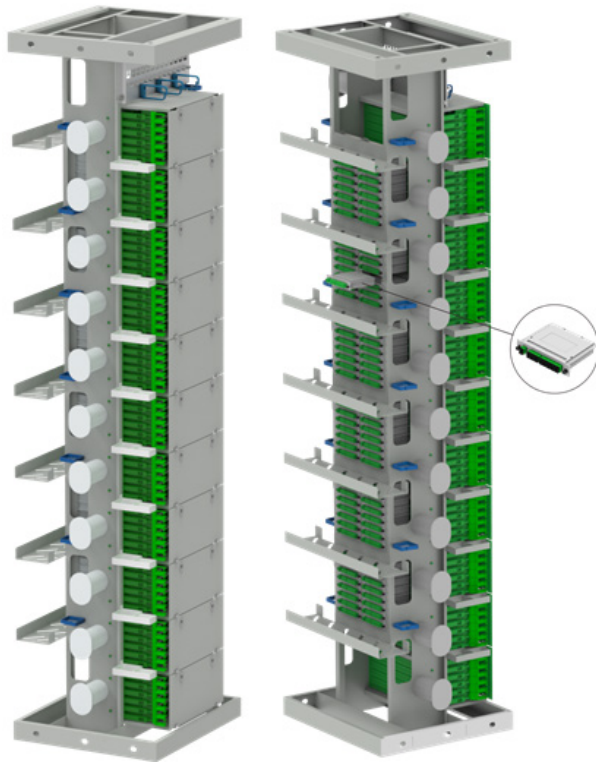


SPECIFICATIONS

| | |
|-------------------|-------------|
| Size (mm) | 482x175x173 |
| Max Capacity (FO) | 144 |

OPTICAL DISPENSERS (ODF)

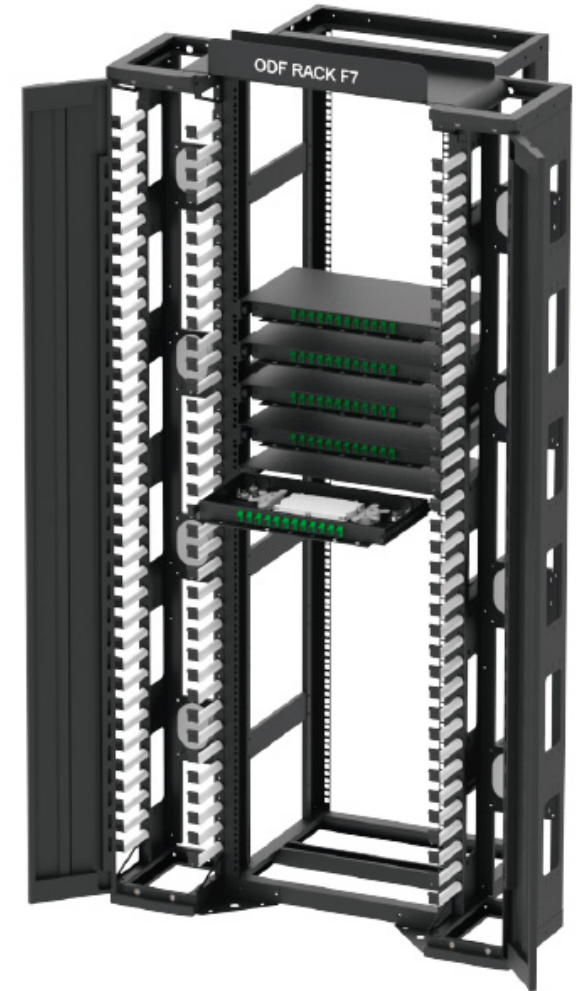
CITO-ODF-F2-792A



CITO-ODF-F4-B



CITO-ODF-F7



| SPECIFICATIONS | |
|-------------------|--------------|
| Size (mm) | 2200x550x500 |
| Max Capacity (FO) | 792 |

| SPECIFICATIONS | |
|-------------------|--------------|
| Size (mm) | 2200x900x300 |
| Max Capacity (FO) | 960 |

| SPECIFICATIONS | |
|-------------------|--------------|
| Size (mm) | 2200x900x600 |
| Max Capacity (FO) | 1128 |

ABOUT PRECONNECTORIZED TERMINATION BOX

Welcome to the future of fiber optic connectivity with the Preconnectorized Terminal Box, a revolutionary solution that redefines efficiency in the telecommunications industry. Seamlessly integrated into this cutting-edge ecosystem is the Citocore Precon Solution, an advanced technology designed to optimize and enhance the performance of preconnectorized solutions.

The Preconnectorized Terminal Box stands as a key component in modern fiber optic installations. Engineered for simplicity and precision, these terminal boxes eliminate the need for expensive equipment and specialized expertise, offering pre-certified and ready-to-use components. The result is a streamlined deployment process, reducing both complexity and the potential for human error.

CITOCORE's Precon Solution complements this innovation by providing a sophisticated framework for the integration of preconnectorized solutions. With a wealth of expertise in the telecommunications sector, CITOCORE ensures seamless compatibility and heightened performance when paired with preconnectorized terminal boxes. The collaborative effort aims to establish a cohesive and efficient fiber optic connectivity environment.

In essence, the CITOCORE's Preconnectorized Terminal Box converge to create a powerful synergy in the realm of fiber optic connectivity. This product not only addresses the current demands of the telecommunications industry but also positions itself as a forward-thinking solution, ensuring a seamless and technologically advanced future for fiber optic installations.



CITO-PRE-2Y



| SPECIFICATIONS | |
|------------------------------|------------------------------------------------|
| L*W*H (mm) | 193*100*54 |
| Max Splicing Capacity (core) | 2 |
| Packing Information | G.W: 6.5Kg QTY: 20pcs MEAS.:450*240*3850mm |

CITO-PRE-4DY



| SPECIFICATIONS | |
|------------------------------|----------------------------------------------|
| L*W*H (mm) | 213*101*82 |
| Max Splicing Capacity (core) | 12 |
| Packing Information | G.W.: 25Kg QTY:40Pcs MEAS.:460*460*515mm |

CITO-PRE-4DY-1



| SPECIFICATIONS | |
|------------------------------|-----------------------------------------------|
| L*W*H (mm) | 202*101*82 |
| Max Splicing Capacity (core) | 12 |
| Packing Information | G.W.: 25Kg QTY: 40pcs MEAS.:510*460*515mm |

CITO-PRE-4DY-2



| SPECIFICATIONS | |
|------------------------------|----------------------------------------------|
| L*W*H (mm) | 235*101*82 |
| Max Splicing Capacity (core) | 12 |
| Packing Information | G.W: 25Kg QTY: 40pcs MEAS.:510*460*515mm |

CITO-PRE-4X



| SPECIFICATIONS | |
|------------------------------|-----------------------------------------|
| L*W*H (mm) | 182*138*78 |
| Max Splicing Capacity (core) | 12 |
| Packing Information | G.W.:9KG QTY:20Pcs MEAS.:425*310*560mm |

CITO-PRE-8X-A



| SPECIFICATIONS | |
|------------------------------|------------------------------------------|
| L*W*H (mm) | 281*177*109 |
| Max Splicing Capacity (core) | 36 |
| Packing Information | G.W.:12KG QTY:10Pcs MEAS.:400*310*615mm |

CITO-PRE-MINI68-10



SPECIFICATIONS

| | |
|------------------------------|---------------------------------------------|
| L*W*H (mm) | 179*171*66 |
| Max Splicing Capacity (core) | - |
| Packing Information | G.W: 28Kg QTY:40pcs MEAS.:810*410*510mm |

CITO-PRE-MINI68-9



SPECIFICATIONS

| | |
|------------------------------|---------------------------------------------|
| L*W*H (mm) | 179*171*66 |
| Max Splicing Capacity (core) | - |
| Packing Information | G.W: 28Kg QTY:40pcs MEAS.:810*410*510mm |

CITO-PRE-8DY



SPECIFICATIONS

| | |
|------------------------------|----------------------------------------------|
| L*W*H (mm) | 264*100*66 |
| Max Splicing Capacity (core) | 12 |
| Packing Information | G.W: 17Kg QTY: 20pcs MEAS.:440*330*460mm |

CITO-PRE-8K



SPECIFICATIONS

| | |
|------------------------------|------------------------------------------------|
| L*W*H (mm) | 270*217*102 |
| Max Splicing Capacity (core) | 96 |
| Packing Information | G.W: 17.8Kg QTY: 10pcs MEAS.:460*290*570mm |

CITO-PRE-8K-1



SPECIFICATIONS

| | |
|------------------------------|------------------------------------------------|
| L*W*H (mm) | 270*218*102 |
| Max Splicing Capacity (core) | 96 |
| Packing Information | G.W: 17.8Kg QTY: 10pcs MEAS.:460*290*570mm |

CITO-PRE-8K-4



SPECIFICATIONS

| | |
|------------------------------|------------------------------------------------|
| L*W*H (mm) | 270*218*102 |
| Max Splicing Capacity (core) | 96 |
| Packing Information | G.W: 17.8Kg QTY: 10pcs MEAS.:460*290*570mm |

CITO-PRE-PRO68-8A-PRE



SPECIFICATIONS

| | |
|------------------------------|---------------------------------------------|
| L*W*H (mm) | 264*182*82 |
| Max Splicing Capacity (core) | 2 |
| Packing Information | G.W: 15Kg QTY:10pcs MEAS.:410*315*510mm |

CITO-PRE-PRO68-8A-PRE1



SPECIFICATIONS

| | |
|------------------------------|---------------------------------------------|
| L*W*H (mm) | 264*182*84 |
| Max Splicing Capacity (core) | 2 |
| Packing Information | G.W: 15Kg QTY:10pcs MEAS.:410*315*510mm |

CITO-PRE-PRO68-8PRE



SPECIFICATIONS

| | |
|------------------------------|---------------------------------------------|
| L*W*H (mm) | 377*255*122 |
| Max Splicing Capacity (core) | 136 |
| Packing Information | G.W: 25Kg QTY: 8pcs MEAS.:540*405*540mm |

CITO-PRE-PRO68-8PRE-A



SPECIFICATIONS

| | |
|------------------------------|---------------------------------------------|
| L*W*H (mm) | 377*255*122 |
| Max Splicing Capacity (core) | 108 |
| Packing Information | G.W: 25Kg QTY: 8pcs MEAS.:500*405*555mm |

CITO-PRE-8SX-A



SPECIFICATIONS

| | |
|------------------------------|----------------------------------------------|
| L*W*H (mm) | 350*200*98 |
| Max Splicing Capacity (core) | 136 |
| Packing Information | G.W: 16Kg QTY: 10pcs MEAS.:450*380*630mm |

CITO-PRE-8SX-1



SPECIFICATIONS

| | |
|------------------------------|----------------------------------------------|
| L*W*H (mm) | 319*207*98 |
| Max Splicing Capacity (core) | 136 |
| Packing Information | G.W: 16Kg QTY: 10pcs MEAS.:450*380*630mm |

CITO-PRE-8T



SPECIFICATIONS

| | |
|------------------------------|---------------------------------------------|
| L*W*H (mm) | 201*180*135 |
| Max Splicing Capacity (core) | 32 |
| Packing Information | G.W: 11Kg QTY:10pcs MEAS.:440*300*770mm |

CITO-PRE-8X



SPECIFICATIONS

| | |
|------------------------------|---------------------------------------------|
| L*W*H (mm) | 329*195*120 |
| Max Splicing Capacity (core) | 68 |
| Packing Information | G.W: 16Kg QTY:10pcs MEAS.:450*370*685mm |

CITO-PRE-8X-16



SPECIFICATIONS

| | |
|------------------------------|---------------------------------------------|
| L*W*H (mm) | 345*195*120 |
| Max Splicing Capacity (core) | 68 |
| Packing Information | G.W: 17Kg QTY:10pcs MEAS.:450*380*685mm |

CITO-PRE-8Y



SPECIFICATIONS

| | |
|------------------------------|------------------------------------------------|
| L*W*H (mm) | 356*216*89 |
| Max Splicing Capacity (core) | 60 |
| Packing Information | G.W: 20.3Kg QTY: 10pcs MEAS.:490*375*545mm |

CITO-PRE-8Y-1



SPECIFICATIONS

| | |
|------------------------------|------------------------------------------------|
| L*W*H (mm) | 356*216*89 |
| Max Splicing Capacity (core) | 60 |
| Packing Information | G.W: 20.3Kg QTY: 10pcs MEAS.:490*375*545mm |

CITO-PRE-8Y-2



SPECIFICATIONS

| | |
|------------------------------|------------------------------------------------|
| L*W*H (mm) | 290*181*83 |
| Max Splicing Capacity (core) | 36 |
| Packing Information | G.W: 12.9Kg QTY: 10pcs MEAS.:410*320*570mm |

CITO-PRE-8ZY-1



SPECIFICATIONS

| | |
|------------------------------|----------------------------------------------|
| L*W*H (mm) | 280*173*74 |
| Max Splicing Capacity (core) | 12 |
| Packing Information | G.W: 17Kg QTY: 20pcs MEAS.:600*390*490mm |

CITO-PRE-8ZY-2



SPECIFICATIONS

| | |
|------------------------------|----------------------------------------------|
| L*W*H (mm) | 294*173*74 |
| Max Splicing Capacity (core) | 12 |
| Packing Information | G.W: 17Kg QTY: 20pcs MEAS.:600*390*490mm |

CITO-PRE-8ZY-3



SPECIFICATIONS

| | |
|------------------------------|----------------------------------------------|
| L*W*H (mm) | 280*173*74 |
| Max Splicing Capacity (core) | 12 |
| Packing Information | G.W: 17Kg QTY: 20pcs MEAS.:600*390*490mm |

CITO-PRE-8ZY-4



SPECIFICATIONS

| | |
|------------------------------|----------------------------------------------|
| L*W*H (mm) | 280*173*74 |
| Max Splicing Capacity (core) | 12 |
| Packing Information | G.W: 17Kg QTY: 20pcs MEAS.:600*390*490mm |

CITO-PRE-8BYK



SPECIFICATIONS

| | |
|------------------------------|------------------------------------------------|
| L*W*H (mm) | 220*217*79 |
| Max Splicing Capacity (core) | 12 |
| Packing Information | G.W: 16.5Kg QTY: 20pcs MEAS.:440*360*460mm |

CITO-PRE-MINI68-12



SPECIFICATIONS

| | |
|------------------------------|----------------------------------------------|
| L*W*H (mm) | 210*199*78 |
| Max Splicing Capacity (core) | - |
| Packing Information | G.W: 17Kg QTY: 20pcs MEAS.:450*430*450mm |

CITO-PRE-MINI68-12-1 CITO-PRE-MINI68-12-2



SPECIFICATIONS

| | |
|------------------------------|----------------------------------------------|
| L*W*H (mm) | 210*199*78 |
| Max Splicing Capacity (core) | - |
| Packing Information | G.W: 17Kg QTY: 20pcs MEAS.:450*430*450mm |

SPECIFICATIONS

| | |
|------------------------------|----------------------------------------------|
| L*W*H (mm) | 210*199*78 |
| Max Splicing Capacity (core) | - |
| Packing Information | G.W: 17Kg QTY: 20pcs MEAS.:450*430*450mm |

CITO-PRE-12BY



SPECIFICATIONS

| | |
|------------------------------|----------------------------------------------|
| L*W*H (mm) | 197*175*77 |
| Max Splicing Capacity (core) | 12 |
| Packing Information | G.W: 17Kg QTY: 20pcs MEAS.:450*430*450mm |

CITO-PRE-12BY-1



SPECIFICATIONS

| | |
|------------------------------|------------------------------------------------|
| L*W*H (mm) | 197*175*77 |
| Max Splicing Capacity (core) | - |
| Packing Information | G.W: 16.5Kg QTY: 20pcs MEAS.:440*360*460mm |

CITO-PRE-12DY



SPECIFICATIONS

| | |
|------------------------------|----------------------------------------------|
| L*W*H (mm) | 363*153*107 |
| Max Splicing Capacity (core) | 56 |
| Packing Information | G.W: 15Kg QTY: 10pcs MEAS.:390*350*630mm |

CITO-PRE-12DY-1



SPECIFICATIONS

| | |
|------------------------------|----------------------------------------------|
| L*W*H (mm) | 337*153*107 |
| Max Splicing Capacity (core) | 56 |
| Packing Information | G.W: 13Kg QTY: 10pcs MEAS.:360*350*630mm |

CITO-PRE-16DX



SPECIFICATIONS

| | |
|------------------------------|------------------------------------------------|
| L*W*H (mm) | 254*213*117 |
| Max Splicing Capacity (core) | 36 |
| Packing Information | G.W: 13.5Kg QTY: 10pcs MEAS.:480*290*710mm |

CITO-PRE-16F-B



SPECIFICATIONS

| | |
|------------------------------|---------------------------------------------|
| L*W*H (mm) | 388*242*128 |
| Max Splicing Capacity (core) | 200 |
| Packing Information | G.W: 23Kg QTY: 6pcs MEAS.:530*425*470mm |

CITO-PRE-16F-C



SPECIFICATIONS

| | |
|------------------------------|---------------------------------------------|
| L*W*H (mm) | 389*242*128 |
| Max Splicing Capacity (core) | 200 |
| Packing Information | G.W: 23Kg QTY: 6pcs MEAS.:530*425*470mm |

CITO-PRE-PRO68-16PRE CITO-PRE-PRO68-16PRE-1



SPECIFICATIONS

| | |
|------------------------------|---------------------------------------------|
| L*W*H (mm) | 378*255*116 |
| Max Splicing Capacity (core) | 136 |
| Packing Information | G.W: 29Kg QTY: 8pcs MEAS.:540*405*620mm |



SPECIFICATIONS

| | |
|------------------------------|---------------------------------------------|
| L*W*H (mm) | 378*255*116 |
| Max Splicing Capacity (core) | 136 |
| Packing Information | G.W: 29Kg QTY: 8pcs MEAS.:540*405*620mm |

CITO-PRE-16S



SPECIFICATIONS

| | |
|------------------------------|----------------------------------------------|
| L*W*H (mm) | 356*216*122 |
| Max Splicing Capacity (core) | 72 |
| Packing Information | G.W: 21Kg QTY: 10pcs MEAS.:480*390*710mm |

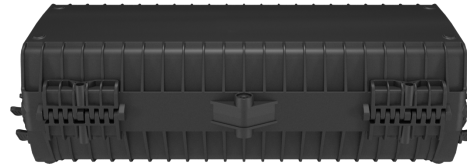
CITO-PRE-16SN



SPECIFICATIONS

| | |
|------------------------------|----------------------------------------------|
| L*W*H (mm) | 445*181*118 |
| Max Splicing Capacity (core) | 48 |
| Packing Information | G.W: 35Kg QTY: 10pcs MEAS.:590*410*700mm |

CITO-PRE-16SY



SPECIFICATIONS

| | |
|------------------------------|---------------------------------------------|
| L*W*H (mm) | 360*160*117.6 |
| Max Splicing Capacity (core) | 84 |
| Packing Information | G.W: 25Kg QTY: 8pcs MEAS.:540*405*540mm |

CITO-PRE-16SX



SPECIFICATIONS

| | |
|------------------------------|----------------------------------------------|
| L*W*H (mm) | 319*221*133 |
| Max Splicing Capacity (core) | 96 |
| Packing Information | G.W: 16Kg QTY: 10pcs MEAS.:480*350*805mm |

CITO-PRE-16SX-A



SPECIFICATIONS

| | |
|------------------------------|----------------------------------------------|
| L*W*H (mm) | 350*221*133 |
| Max Splicing Capacity (core) | 96 |
| Packing Information | G.W: 17Kg QTY: 10pcs MEAS.:480*380*805mm |

CITO-PRE-16X



SPECIFICATIONS

| | |
|------------------------------|----------------------------------------------|
| L*W*H (mm) | 416*199*121 |
| Max Splicing Capacity (core) | 72 |
| Packing Information | G.W: 23Kg QTY: 10pcs MEAS.:480*430*770mm |

CITO-PRE-16X-1



SPECIFICATIONS

| | |
|------------------------------|----------------------------------------------|
| L*W*H (mm) | 416*199*121 |
| Max Splicing Capacity (core) | 96 |
| Packing Information | G.W: 23Kg QTY: 10pcs MEAS.:440*430*770mm |

CITO-PRE-16X-2



SPECIFICATIONS

| | |
|------------------------------|---------------------------------------------|
| L*W*H (mm) | 398*199*183 |
| Max Splicing Capacity (core) | 160 |
| Packing Information | G.W: 19Kg QTY: 6pcs MEAS.:440*430*650mm |

CITO-PRE-16X-A



SPECIFICATIONS

| | |
|------------------------------|---------------------------------------------|
| L*W*H (mm) | 430*196*139 |
| Max Splicing Capacity (core) | 144 |
| Packing Information | G.W: 26Kg QTY: 8pcs MEAS.:460*440*640mm |

CITO-PRE-16Y



SPECIFICATIONS

| | |
|------------------------------|------------------------------------------------|
| L*W*H (mm) | 256*213*117 |
| Max Splicing Capacity (core) | 36 |
| Packing Information | G.W: 13.5Kg QTY: 10pcs MEAS.:480*290*710mm |

CITO-PRE-16Y-2



SPECIFICATIONS

| | |
|------------------------------|------------------------------------------------|
| L*W*H (mm) | 256*213*117 |
| Max Splicing Capacity (core) | 36 |
| Packing Information | G.W: 13.5Kg QTY: 10pcs MEAS.:480*290*710mm |

CITO-PRE-16Y-3



SPECIFICATIONS

| | |
|------------------------------|------------------------------------------------|
| L*W*H (mm) | 254*213*117 |
| Max Splicing Capacity (core) | 36 |
| Packing Information | G.W: 13.5Kg QTY: 10pcs MEAS.:480*290*710mm |

CITO-PRE-18X



SPECIFICATIONS

| | |
|------------------------------|---------------|
| L*W*H (mm) | 430*196*137.5 |
| Max Splicing Capacity (core) | - |
| Packing Information | - |

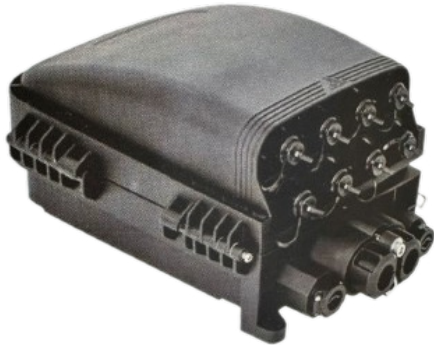
CITO-PRE-MINI68-18



SPECIFICATIONS

| | |
|------------------------------|-------------------------------------------------|
| L*W*H (mm) | 210*199*107 |
| Max Splicing Capacity (core) | - |
| Packing Information | G.W: 19Kg QTY: 20pcs MEAS.:460*440*640mm |

CITO-PRE-8F-PRE-001



SPECIFICATIONS

| | |
|------------------------------|-------------------------------------------------|
| L*W*H (mm) | 310*204*139 |
| Max Splicing Capacity (core) | 100 |
| Packing Information | G.W: 19Kg QTY: 10pcs MEAS.:460*370*805mm |



PRECONNECTORIZED FLAT DROP CABLE WITH STANDARD SC CONNECTORS



| SPECIFICATIONS | |
|---------------------------------------------|-----------------------------|
| Connector type | SC, type UPC or APC |
| Cable type | flat or round drop cable |
| Fiber type | G.657A1, G.657A2 or G.657B3 |
| Compatibility with other brands of adapters | No |
| Function | Connection to end user |

ROUND PRECONNECTORIZED CABLE WITH BAYONET CONNECTORS



| SPECIFICATIONS | |
|---------------------------------------------|-----------------------------------|
| Connector type | SC/APC |
| Cable type | 5mm round |
| Fiber type | G.657A1, G.657A2 or G.657B3 |
| Compatibility with other brands of adapters | Yes |
| Function | Interconnection between nap boxes |

PRECONNECTORIZED FLAT DROP CABLE WITH MINI SC CONNECTORS



| SPECIFICATIONS | |
|---------------------------------------------|-----------------------------|
| Connector type | SC/APC |
| Cable type | flat cable 2*5mm |
| Fiber type | G.657A1, G.657A2 or G.657B3 |
| Compatibility with other brands of adapters | Yes |
| Function | Connection to end user |



PRE-CONNECTORIZED HYBRID CONNECTOR

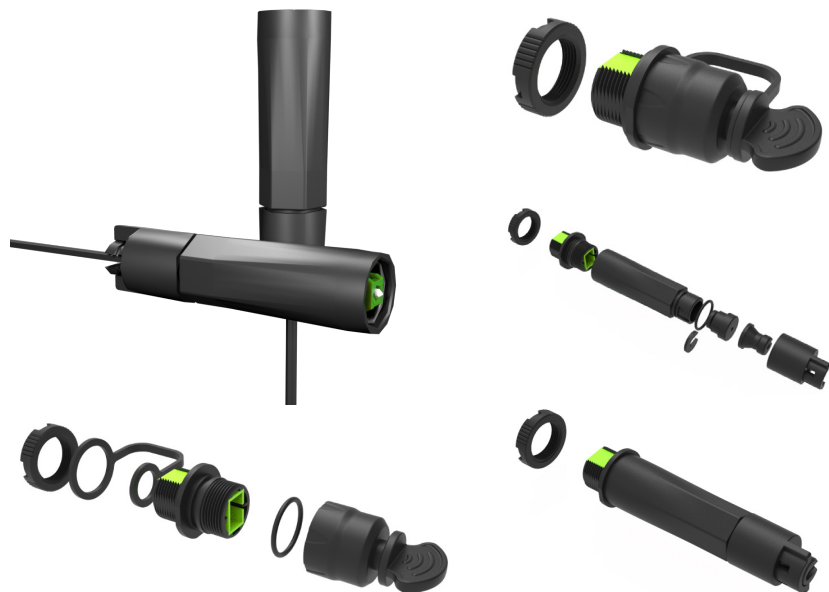


CITOCORE's hybrid connector is an innovation that integrates a main body, where the SC/APC type connector is installed (in compliance with the IEC61754-4 standard), and various adapters that act as translators to provide compatibility with other solutions on the market.

SPECIFICATIONS

| | |
|-----------------------|--------------------------------------------------|
| Application cable | Round cable 5.0 mm, drop cable 2x3 mm and 2x5mm |
| IL (dB) | ≤0.15 dB (typical value) ≤0.3 dB (maximum value) |
| RL(dB) | ≥60dB |
| Mechanical durability | 50 times IL≤0.3dB |
| Tensile strength | ≥200N |
| Operation temperature | -25°C+85°C |
| IP | 68 |

ADVANCONNECT SOLUTION



The ADVANCONNECT preconnectorized solution represents a technological breakthrough designed to fortify the external cable connection with mechanical connectors, mitigating challenges that often arise during installation and maintenance due to box openings.

Employing a strategic system of protective covers, the connection points are effectively shielded from external elements, guaranteeing the cable's optimal tension. Its durable plastic structure, coupled with UV protection, equips it to endure the rigors of outdoor installations and environmental conditions.

Versatile in its application, the ADVANCONNECT solution seamlessly accommodates both flat and round drop cables. To further meet aesthetic preferences, adapters are available in an array of colors, including black, gray, and customizable options upon request. This solution ensures not only robust connectivity but also a visually tailored integration into diverse environments.

CITO-COI-001



CITO-COI-002



CITO-COI-003



CITO-COI-004



CITO-COI-005



CITO-COI-006



CITO-COI-007





Fuzhou Citocore Technology is a leading provider of advanced fiber optic solutions with headquarters in Fuzhou, China, and production facilities in Shanghai and Ningbo. Their team of top-tier engineers collaborates with global distributors and operators.

Phone

(+86) 18116415220

Email

info@citocore.com

Head Office Address

Office B802, 8th floor, No. 121 East Street, Gulou District,
Fuzhou City, Fujian Province, China